



THE PRESIDENT'S MESSAGE

*"That's the Irish people all over – they treat a serious thing as a joke and a joke as a serious thing."
- Dramatist Sean O'Casey, 1923*



Alan R. Williamson, PE
2023-2024 ASHE President

Dear ASHE Harrisburg Members:

Tá an tErrach linn! (It's Springtime!)

Local news stations and meteorologists are reporting that this winter was the warmest winter on record...Are they forgetting the under 10-to-15-degree temperatures that endured in January??? Nonetheless, I am happy we are finally at spring and truly warmer days to be outside...

For those that participated in the February Troegs event with the PTC – thank you and I hope everyone enjoyed their evening. The Troegs event is one that always delivers and delivers well. It's been sold out over many years – we are evaluating if we can expand that event into a larger space so that we can allow more attendees...stay tuned as our planning groups will begin working on next year's event. Thank you to Joe Sutor, Steve Guinter, Danielle Derolf, Brian Pinamonti and Jeff Wilson (audio technician) and any others I may have missed! Also, thank you to our guests Mark Compton and Brad Heigel. Great night...

We are down to the last weeks of the 2023-2024 ASHE Harrisburg calendar. As I write this message, the next event is the 1st Annual Bowling Event (SOLD OUT!), which is tomorrow. I could not be any more pleased with the response from all

President's Message continued on next page

**THIS ISSUE IS
SPONSORED BY:**

American Geotechnical &
Environmental Services, Inc.
Dewberry Engineers, Inc.
Herbert Rowland & Grubic, Inc.
McCormick Taylor, Inc.

Pennsylvania Asphalt Pavement
Association
Stantec Consulting Services, Inc.
T.W. Engineering, Inc.
Traffic Planning and Design, Inc.

of you, our membership and our Century Club Members. At ASHE Harrisburg, our focus has been driving the scholarship so that we can play a role in shaping our local students entering into our industry. Everyone that participates, attends, donates and generally are active in our Section, please give yourself a round of applause. It is because of you that our scholarship program is among the most successful across all the ASHE Sections not only in Pennsylvania but the nation! And the Bowling Event will hopefully become another annual staple in our calendar to get out, network, have fun and help raise money to support the scholarship program.

Following the Bowling Event, the remaining weeks will be filled with a technical luncheon from the Director of Engineering for Hershey Entertainment; the annual ASHE/ PennDOT/PTC Conference; Spring Adopt-A-Highway; Annual Awards Banquet; and lastly, another new event to volunteer our time with the Central PA Food Bank. Find more details on our website or look out for email blasts coming from Nick Vereb, Section Administrator. Thank you, Nick!

Looking toward next year, we have received excellent responses from current members as well as potential future members who want to join and be a part of the leadership serving as a Director. Stay tuned as we will be distributing candidate information and asking for votes to be your new 3-year Directors starting in 2024-2025 with terms expiring at the end of 2026-2027. Wonderful response and I look forward to any of them being future leaders of the Harrisburg Section.

As always, thank you to the 2023-2024 Officers and Directors and thank you to all the members for your attendance and active participation.

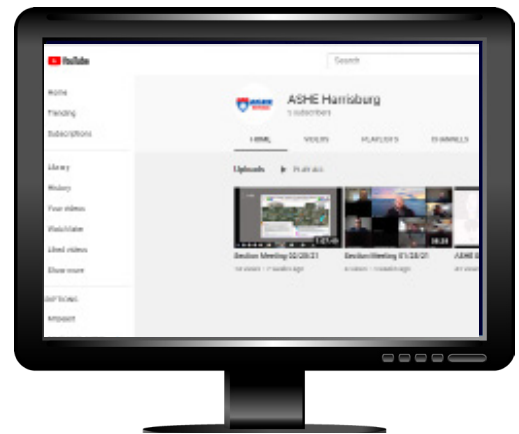
Sláinte!

Alan



All members that refer new members to join ASHE Harrisburg will be entered into a raffle at each lunch/dinner meeting to win a bottle of ASHE wine straight from Nissley Vineyards.

Be the person that brings in the most member applications between now and the April 23rd meeting and win a special prize at the Annual Awards Banquet in May!!!



CLICK THE SCREEN TO CHECK IT OUT

Make sure to subscribe to the ASHE Harrisburg Youtube channel to watch the latest meetings.

ASHE COMMITTEES AND CONTACTS 2023-2024

Alan Williamson & Kevin Scheurich



Finance and Audit
Chris Messner, PE

Program and Professional Development
Kevin Scheurich, PE

Scholarship and Student Development
Virginia Bailey

Public Relations
Kay Morris

Membership
Joe Sutor, PE

Legislative and Government Affairs
Paul McNamee, PE

Communications
Fawad Ahmed, PE

Fellowship
Steve Ginter, PE

Awards Committee
Paul McNamee, PE

Adopt-a-Highway
Mark Greenholt, PE

Century Club
Greg Soule, PE

ASHE OFFICERS AND BOARD OF DIRECTORS 2023-2024 HARRISBURG SECTION



President

Alan R. Williamson, PE | Pennsylvania Turnpike Commission

First Vice President

Kevin Scheurich, PE | Pennsylvania Turnpike Commission

Second Vice President

Virginia Bailey | McCormick Taylor

Immediate Past President

Jason Hursh, PE | Larson Design Group

Treasurer

Chris Messner, PE | GPI

Assistant Treasurer

W. Andrew Bitner, PE, PLS | Fairview Township

Secretary

Bob Leonard, PE | Erdmwan Anthony

Section Administrator

Nicholas Vereb | Michael Baker International

Marketing Coordinator

Kay Morris | Skelly & Loy

Northeast Regional Board Delegate

Paul McNamee, PE | KCI Technologies

Directors - Term Expires in 2023:

Joe Sutor, PE | PTC

Greg Soule, PE | SAI Consulting Engineers

Virginia Bailey, PE | McCormick Taylor

Matt Nulton, PE | JMT

Steven Guinter, PE | AMT Engineering

Directors - Term Expires in 2024:

Danielle Deroff, PE | Dawood

Brian Daubenspeck, PE | TPD

Tyler Kerstetter, PE | CDM Smith

Brian Pinamonti, PE | KCI

Kevin Starner | Skelly & Loy

Directors - Term Expires in 2025:

Steven Moore, PE | PennDOT

Keith Lilley, PE | HW Lochner

Elwood Kimmel | TranSystems

Mark Lemon, PE | Michael Baker

Kyle Hostetter | GPI

CONTACT US:

Contact Info Updates & Membership Applications:

If your contact information changes, or if you wish to submit an application and payment to become an ASHE member, please contact Nick Vereb - Section Administrator for ASHE Harrisburg. A copy of the new member application can be found at the end of this newsletter.

Michael Baker International

Attn: Nick Vereb

4431 N. Front Street, 2nd Floor, Harrisburg, PA 17110-1709

Phone: (717) 221-2036 Email: nicholas.vereb@mbakerintl.com

New Membership Contact:

If you are a member that has recently joined and would like to talk to someone about what the ASHE Harrisburg Section does or how to get involved, please contact Nick Vereb.

Nick Vereb

Phone: (717) 221-2036 Email: nicholas.vereb@mbakerintl.com

Profile Contact:

If you have news for ASHE Profile, please contact Fawad Ahmed, Profile Editor for ASHE Harrisburg:

Navarro & Wright Consulting Engineers, Inc.

Attn: Fawad Ahmed, PE

Phone: (717) 418-3829 Email: fahmed@navarrowright.com

Find Us At: Local: www.harrisburg.ashe.pro National: www.ashe.pro

VOLUNTEER FOR COMMITTEE MEMBERS

As most of you know, ASHE is an organization that is run by folks who volunteer their time. However, the reward for volunteering is tremendous.

When you volunteer your time you:

- Become a transportation industry advocate
- Participate in committees that are on the leading edge of industry initiatives and technology
- Develop a better understanding of the engineering business
- Create life-long relationships and friends

For these reasons, we ask all members to consider volunteering to participate in an ASHE committee. You do not have to be an Officer or on the Board of Directors to make a difference. If you are interested in helping out, our committees are listed to the left along with a contact. Please feel free to reach out to any committee that sounds interesting, or contact Brad Heigel, ASHE President, and he will help hook you up with a committee in need of volunteer support.

Thank you for considering getting involved!


 Thank
 you!

THE ASHE HARRISBURG SECTION *wishes to thank*
 THE FOLLOWING CENTURY CLUB MEMBERS FOR THEIR
 SUPPORT DURING 2023-2024.

A. Morton Thomas and Associates, Inc.
 A.D. Marble & Company, Inc.
 AECOM
 AI Engineers, Inc.
 Alfred Benesch & Company
 American Engineers Group, LLC
 American Geotechnical & Environmental
 Services, Inc.
 Arora and Associates, PC
 Arrow Land Solutions, LLC
 Associated Pennsylvania Constructors
 AWK Consulting Engineers, Inc.
 Bergmann, PC
 CDM Smith, Inc.
 Century Engineering, Inc.
 Dawood Engineering, Inc.
 Dewberry Engineers, Inc.
 Erdman, Anthony and Associates, Inc.
 Federal Highway Administration
 Fisher Associates, PE, LS, LA, DPC
 Gannett Fleming, Inc.
 Geo-Explorers, Inc.
 Gibson-Thomas Engineering Co., Inc.
 Greenman-Pedersen, Inc.
 H.W. Lochner, Inc.

HDR, Inc.
 Herbert, Rowland & Grubic, Inc.
 HNTB Corp.
 JBC Associates, Inc.
 Johnson, Mirmiran & Thompson, Inc.
 KCI Technologies, Inc.
 Keller Engineers, Inc.
 Kimley-Horn and Associates, Inc.
 KJ Consulting & Environmental Services, LLC
 Larson Design Group, Inc.
 McCormick Taylor, Inc.
 McMahon, a Bowman company
 Michael Baker International
 Modjeski and Masters, Inc.
 Navarro & Wright Consulting Engineers, Inc.
 New Enterprise Stone & Lime Co., Inc.
 NTM Engineering, Inc.
 P. Joseph Lehman, Inc., Consulting Engineers
 Pennoni Associates Inc.
 Pennsylvania Asphalt Pavement Association
 Pennsylvania Turnpike Commission
 Prudent Engineering, LLP
 Quality Engineering Solutions, Inc.
 Reilly Associates

Remington & Vernick Engineers, Inc.
 RETTEW Associates, Inc.
 RK&K
 SAI Consulting Engineers, Inc.
 Skelly and Loy, Inc., a Terracon company
 Stahl Sheaffer Engineering, LLC
 Stantec Consulting Services, Inc.
 STV Incorporated
 Sucevic, Piccolomini & Kuchar Engineering,
 Inc.
 Susquehanna Civil Inc.
 T.W. Consultants, Inc.
 T.W. Engineering, Inc.
 T2 Utility Engineers, Inc.
 Taylor Wiseman & Taylor
 The EADS Group, Inc.
 The Markosky Engineering Group, Inc.
 Traffic Planning and Design, Inc.
 Urban Engineers, Inc.
 Volkert, Inc.
 Wallace Montgomery and Associates, LLP
 Whitman, Requardt & Associates, LLP
 Whitney Bailey Cox & Magnani, LLC
 Wilson Consulting Group, PC



*The Century Club is comprised of ASHE members
 who have made a \$250 pledge to support the ASHE
 Harrisburg Section's activities.*

Century Club Members are prominently displayed in The Profile up to eight times a year. The Profile is issued monthly to approximately 400 Section Members in South Central Pennsylvania. The Century Club is an excellent opportunity to gain recognition among your colleagues, while actively supporting ASHE.

Visit www.harrisburg.ashe.pro/century-club/ or email Gregory Soule, PE at gsoule@saiengr.com to make your pledge.

DISTRICT 8-0 MARCH & APRIL 2024 ANTICIPATED LETTINGS

MPMS	County	State Route	Project Title	Short Narrative	Let Date	Range
105346	Perry	274	Big Spring Road Resurface	"PA-274 from Franklin County line to Shearer Dug Trail Toboyne Twp, Resurface, drainage, guiderail updates"	03/14/2024	\$2,500,000 to \$5,000,000
120645	Dauphin	0	2024-2025 Guiderail Contract	"District guiderail repair contract, Various SR's, Districtwide"	03/28/2024	\$5,000,000 to \$7,500,000
120684	Lancaster	4045	Strickler Road Br over SR 283 Permanent Repairs	"Bridge Preservation Strickler Road (Route 4045) bridge spanning Route 283, Rapho Township, Lancaster County"	03/28/2024	\$500,000 to \$1,000,000
88951	York	30	US30: PA 74 to N George St	"SR 30 from PA 74 to George Street, Manchester Twp, W. Manchester Twp, York City, York County, Highway Restoration"	03/28/2024	\$7,500,000 to \$10,000,000
115785	Dauphin	422	Derry Township Ped X-ing	"Pedestrian Crossing Improvements, Intersection of Valley Road and Chocolate Avenue (US 422) & Intersection of Jonathan Eshenour Memorial Trail and Fishburn Road (SR 743) at Harley Road, Derry TWP"	04/11/2024	\$1 to \$100,000
111910	Lebanon	0	Lebanon City Resurfacing Phase 4 - Cumberland St	"Roadway Resurface, Cumberland Street from S 5th Ave to N 16th St, Lebanon City, Lebanon County"	04/11/2024	\$1,000,000 to \$2,500,000
115784	Dauphin	3016	Capital Gateway	"Bike/Ped improvements, Forster Street (SR 3016) from Susquehanna River to 2nd St, City of Harrisburg"	04/18/2024	\$1,000,000 to \$2,500,000
78888	York	1019	Wago Road Bridge	"Bridge Rehabilitation, SR 1019 over Diversion Channel East Manchester Twp"	04/18/2024	\$5,000,000 to \$7,500,000

CAREER OPPORTUNITIES: [Recently posted on www.harrisburg.ashe.pro/career/](http://www.harrisburg.ashe.pro/career/)

A. Morton Thomas and Associates A.D. Marble and Company Alfred Benesch & Company Federal Highway Administration H.W. Lochner, Inc. HDR, Inc. Keller Engineers, Inc.	Kimley-Horn and Associates, Inc. McCormick Taylor, Inc. Michael Baker International NTM Engineering, Inc. P. Joseph Lehman, Inc. Pennsylvania Turnpike Commission Skelly and Loy, Inc.	Stahl Sheaffer Engineering, LLC Stantec Consulting Services, Inc. Susquehanna Civil Inc. The Markosky Engineering Group. Traffic Planning and Design, Inc. Whitman, Requardt & Associates Whitney Bailey Cox & Magnani, LLC
---------------------------------------------------------------------------------------------------------------------------------------------------------------------------------------	----------------------------------------------------------------------------------------------------------------------------------------------------------------------------------------------------------	-----------------------------------------------------------------------------------------------------------------------------------------------------------------------------------------------------------------------------------------------

ASHE Harrisburg Useful Links

[ASHE About Us Info](#)
[Current Leadership and Member History](#)
[The Century Club](#)
[Become an ASHE Member](#)
[Renew your ASHE Membership](#)
[ASHE Harrisburg Associated Links](#)
[ASHE Harrisburg Events](#)
[ASHE Harrisburg Photo Contest](#)
[ASHE Harrisburg Photo Gallery](#)
[ASHE Harrisburg Scholarship Info](#)

ASHE MISSION STATEMENT - The mission of the American Society of Highway Engineers is to promote the quality planning, design, construction, maintenance and operation of safe and efficient highways; to foster a general understanding of the economic importance of highways and seek support for their fiscal viability; to advance the highway aspects of intermodal transportation; to stimulate and publicize technology advances in the highway field; to encourage communication and cooperation among all segments of the highway industry; to stress the value of individuals; and to facilitate the ethics, leadership, and career growth of its members.



TROEGS BREWERY - PTC SOCIAL EVENT FEBRUARY 29, 2024



1ST ANNUAL ASHE HARRISBURG

Bowling Outing

All Proceeds Support the ASHE Scholarship Fund

Registration Deadline: March 6, 2024

Cost:

\$130.00/Team of Four
Prizes, Lunch, Refreshments
3 Games and Shoe Rental

Format:

Four Person Teams

Sponsorships:

Game 1 (\$250) - Includes foursome and advertising
 Game 2 (\$250) - Includes foursome and advertising
 Game 3 (\$250) - Includes foursome and advertising
 Lunch (\$200) - Includes foursome and table placard
 Soft Drinks (\$200) - Includes foursome and table placard
 (Bar available for individual expense)
 Prize Sponsorship (\$50 each) - 15 available

ABC EAST BOWLING LANES

1001 Eisenhower Blvd, Harrisburg, PA 17111

March
20

Registration: **12:00 - 12:30**

Games Start at 12:30

ONLINE REGISTRATION • INCLUDE CAPTAIN, 3 TEAM MEMBERS

Upcoming Events

March

20th - ASHE Harrisburg 1st Bowling Challenge at ABC East Lanes

April

9th - ASHE/WTS Technical Luncheon - Hershey Italian Lodge

23rd - 18th Annual ASHE Harrisburg/ PennDOT Engineering District 5-0 and 8-0/ PTC Joint Conference

TBD - Spring Adopt-A-Highway Event

May

TBD - Annual Awards Banquet

TBD - Service Project for the Central PA Food Bank

Please view the registration link here:

<https://ashe-harrisburg.ticketspice.com/ashe-harrisburg-bowling-outing-2024->

ADOPT-A-HIGHWAY

Please support the Harrisburg Chapter of the American Society of Highway Engineers by helping to keep our Pennsylvania highways clean and beautiful!

To get involved with the SPRING Adopt-A-Highway Event in April 2024, please contact Mark Greenholt at mgreenholt@gfnet.com or Elwood Kimmel at ehkimmel@transystems.com



Founded in 1995, American Geotechnical & Environmental Services, Inc. has grown to be one of the largest specialty geotechnical consultants in the northeastern United States, providing geotechnical engineering services on public infrastructure projects. With a staff of 35 Engineers and 25 Geologists, of which 46 are certified test boring inspectors, we can assist in any of your current and future projects.



American Geotechnical & Environmental Services, Inc.



DELIVERING
TRANSPORTATION
SOLUTIONS TO ACHIEVE
OUTSTANDING RESULTS
FOR YOUR COMMUNITY

 **Dewberry**

www.dewberry.com



 **McCORMICK TAYLOR**

- Highway Engineering
- Traffic Engineering
- Structural Engineering
- Water Resources Engineering
- Transportation Planning
- Communications Services
- Environmental Services
- Energy Services
- Construction Services
- Creative & Technology Services

mccormicktaylor.com

 **HRG**



Designing Solutions that
Strengthen Communities



Engineering | Planning | Infrastructure Solutions
www.hrg-inc.com




Established in 1932, PAPA is the recognized and respected voice of the Pennsylvania asphalt pavement industry.

Our mission is to promote and provide our customers with the best available asphalt pavement technology and to represent and serve the common interests of our members.

JOIN NOW!



Pennsylvania Asphalt Pavement Association
 3544 N. Progress Ave.
 Suite 100
 Harrisburg, PA 17110

717.657.1881
www.pa-asphalt.org



Stantec proudly supports ASHE-Harrisburg

Design with community in mind
stantec.com

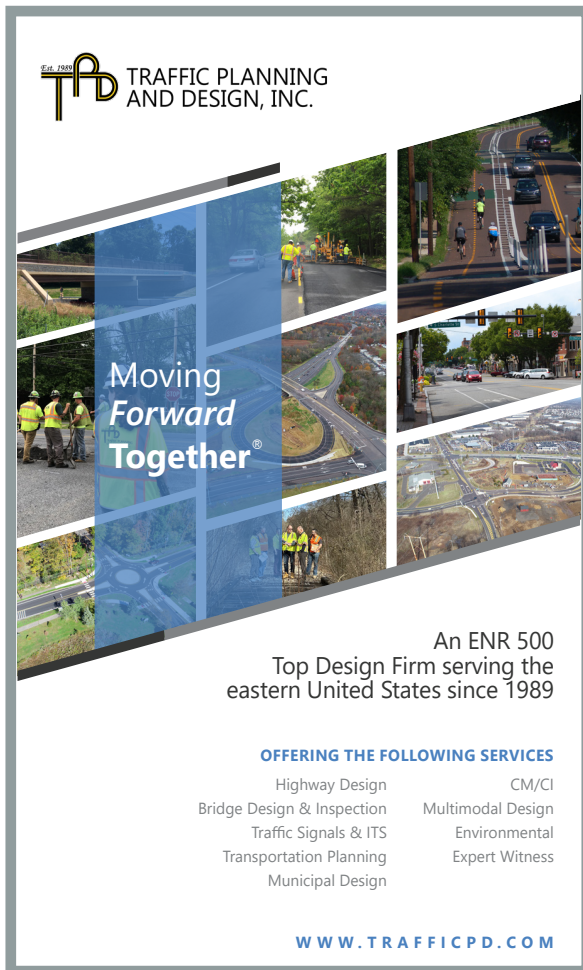
Moving Forward Together

An ENR 500 Top Design Firm serving the eastern United States since 1989

OFFERING THE FOLLOWING SERVICES

Highway Design	CM/CI
Bridge Design & Inspection	Multimodal Design
Traffic Signals & ITS	Environmental
Transportation Planning	Expert Witness
Municipal Design	

WWW.TRAFFICPD.COM



T. W. CONSULTANTS, INCORPORATED

Providing Quality Engineering & Planning Services For Over 30 Years



Construction Management
 Inspection & Documentation
 GPS/Surveying

5500 Corporate Drive ♦ Suite 300 ♦ Pittsburgh, PA 15237 ♦ (412) 369-7500
 4811 Jonestown Road ♦ Suite 224 ♦ Harrisburg, PA 17109 ♦ (717) 540-5600

ASHE MARCH CHARITY OF THE MONTH



United Methodist Home for Children, Inc.
 5120 Simpson Ferry Road
 Mechanicsburg PA 17050
<https://umhc.org/>

The United Methodist Home for Children (UMHC) was founded in 1917 by the Central Pennsylvania Conference of the Methodist Church (now the Susquehanna Conference of the United Methodist Church) as an orphanage. Each day, the Mechanicsburg campus serves approximately 35 children between the ages of 12-20 using a collaborative trauma-informed approach to care. UMHC contracts with county, state and federal agencies to provide safe, residential care to youth and support services to their families and communities.

When, as a community, we make sure that everyone can reach their potential and fully contribute to our communities, we all benefit. Maximizing the potential of children, people who are our neighbors, our workforce, and our civic body ensures that our communities remain vibrant places to live, work, and play.

Each child is one caring adult away from being a success story! Providing a home, community and services where youth can achieve their human potential and thrive in their communities is a ministry calling.

BE THAT ONE CARING ADULT AND DONATE! [CLICK HERE TO DONATE NOW](#)



ASHE Harrisburg **SAVE THE DATE** **WTS**
 Central Pennsylvania
 Advancing women
 Advancing transportation

ASHE/WTS Technical Luncheon

TOPIC
Navigating Excellence: Hershey Entertainment's Robust Engineering and Safety Practices

SPEAKER
 Brad Kirkham, PE
 Director of Engineering with
 Hershey Entertainment & Resorts

DATE AND TIME
 Tuesday, April 9th
 11:30 am - 1:30 pm

ADDITIONAL VENUE AND EVENT DETAILS TO FOLLOW

Venue: Hershey Italian Lodge
 128 Hillcrest Rd, Hershey, PA 17033

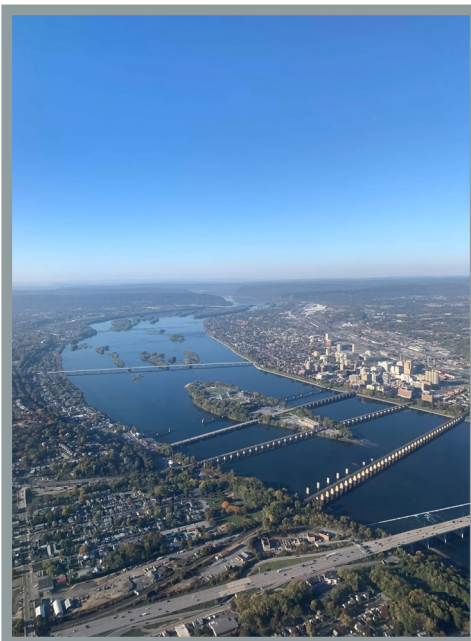


Photo Contest: Fiscal Year 2023-24

The schedule for the ASHE Harrisburg Photo Contest is the following:

- ▶ Photo Entry Deadline is the January Meeting
- ▶ Entries will be displayed at the February Meeting
- ▶ Judging via Online Survey emailed to members
- ▶ Cash Prizes Awarded at the March Meeting

PHOTO CONTEST WINNERS: 2022-2023



FIRST PLACE
 Coming Home
 - Shaun Bentz

This photo was taken on approach to Harrisburg International Airport (HIA). I happened to glance out the window and recognize the infamous handful of bridges crossing the Susquehanna River in Harrisburg. I've crossed these bridges many times, but was lucky enough to capture them from this angle.



SECOND PLACE
 Double Roundabout
 Dumbell Interchange
 -Danielle Derolf

This photograph was taken from my window seat on a flight to Charlotte, North Carolina. The interchange is Exit 30 to Griffith Street on I-77 in Davidson, NC. This interchange was completed in 2019 and included a new bridge, sidewalks, bike lanes, and the featured roundabouts.



THIRD PLACE
 Views of an Inspector
 - Tyler Martin

This is a photograph of the Pennsylvania Turnpike Segmental Box Girder Bridge over the Susquehanna River near Harrisburg, PA. The photograph was taken during a routine inspection of the bridge in 2022 from the basket of an underbridge crane.



Click the application for a printable copy.



***AMERICAN SOCIETY OF
HIGHWAY ENGINEERS***
INCORPORATED 1958, HARRISBURG, PA.

MEMBERSHIP APPLICATION

Name _____ Date _____
(first) (middle) (last)

RESIDENCE ADDRESS:

Street _____ City _____
State _____ Zip/Postal Code _____
Phone _____ E-Mail _____
Fax _____

YOUR EMPLOYER:

Company Name _____ Job Title _____
Street _____ City _____
State _____ Zip/Postal Code _____
Phone _____ E-Mail _____
Fax _____

Please send my American Society of Highway Engineers correspondence to my Residence Workplace

EDUCATIONAL BACKGROUND:

High School:

High School _____
Course _____ Graduation Date (m / y) _____

Undergraduate Degree:

College / University _____
Major _____ Graduation Date (m / y) _____

Graduate Degree:

College / University _____
Major _____ Graduation Date (m / y) _____

PROFESSIONAL LICENSURE:

Registered Engineer Land Surveyor-in-Training Not Licensed
 Registered Land Surveyor Engineer-in-Training Other _____

Primary State: _____ Registration No.: _____ Certification Date: _____



MEMBERSHIP APPLICATION (continued)

Total Years Experience in the Highway Industry (briefly describe) _____

Work Sector (check one):

DOT _____ City _____ County _____ Federal _____ Consultant _____ Contractor _____ Supplier _____ Other (explain) _____

Work Specialty (check one):

Design _____ Construction _____ Inspection _____ Survey _____ CADD _____ Maintenance _____ Other (explain) _____

If accepted, I will abide by the Constitution, By-Laws, and Code of Ethics of American Society of Highway Engineers

Signature _____ Date _____

Sponsoring Member _____

(Print)

(Signature)

FOR USE BY SECTION:

APPLICATION FOR: ADMISSION TRANSFER REINSTATEMENT (LAPSE WITHIN CURRENT OR PRIOR YEAR)

Received by Section _____

Action of Membership Committee _____

Action of Board of Directors _____

Above signatures of Sponsoring Member, Membership Committee and at least one Board of Directors member, indicate that the Applicant has been evaluated and their experience as indicated on this application has been verified and all agree with admission to membership.

FOR USE BY NATIONAL SOCIETY

Approved _____ Date _____

Initiation Fee Received and Recorded _____

No Fee for Transfer _____

AMERICAN SOCIETY OF HIGHWAY ENGINEERS

Kindly make your check payable to: ASHE Harrisburg Section in the amount of \$60.00 and mail to:

ASHE Harrisburg Section
 Attn: Secretary
 P.O. Box 322
 Camp Hill, PA 17011-0322