



## THE PRESIDENT'S MESSAGE



**Jason Hursh, PE**  
*2022-2023 ASHE President*

**Dear ASHE Harrisburg Members:**

Over the past few months we've had some great events for our section to attend and get involved with. Not least of which was an event organized by 1st VP Alan Williamson and Board Member, Kevin Starner.



In March we held our first Harrisburg Section Meeting on the campus of Shippensburg University with the newly formed student Chapter of ASHE. The event was attended by 9 students and around 20 Section Members which included several Shippensburg Alumni. We invited the students to present their senior projects during the meeting. The projects included a very interesting permeable pavement design, a laser printed water pump system, and anti-seep footer application for a concrete dam structure. The projects were developed by teams over several years and culminated in their senior project presentations.

*President's Message continued on next page*

**THIS ISSUE IS SPONSORED BY:**

- Alfred Benesch & Company
- HDR, Inc.
- RK&K
- American Engineers Group, LLC
- HNTB Corp.
- SAI Consulting Engineers, Inc.
- American Geotechnical & Environmental Services, Inc.
- Herbert, Rowland & Grubic, Inc.
- Skelly and Loy, Inc.
- Applied Research Associates, Inc.
- KCI Technologies, Inc.
- Stahl Sheaffer Engineering, LLC
- Arora and Associates, PC
- Keller Engineers, Inc.
- Susquehanna Civil Inc.
- Arrow Land Solutions, LLC
- Kimley-Horn and Associates, Inc
- Susquehanna Valley Construction Corp.
- C.C. Johnson & Malhotra, PC
- KJ Consulting & Environmental Services, LLC
- The EADS Group, Inc.
- CDM Smith, Inc.
- Larson Design Group, Inc.
- The Markosky Engineering Group, Inc.
- CDR Maguire, Inc.
- McCormick Taylor, Inc.
- Traffic Planning and Design, Inc.
- Century Engineering, Inc.
- Navarro & Wright Consulting Engineers, Inc.
- T.W. Consultants, Inc.
- Dawood Engineering, Inc.
- New Enterprise Stone & Lime Co., Inc
- T.W. Engineering, Inc.
- Dewberry Engineers, Inc.
- NTM Engineering, Inc.
- Wallace Montgomery and Associates, LLP
- Great Valley Consultants
- P. Joseph Lehman, Inc.
- Whitman, Requardt & Associates, LLP
- Greenman-Pedersen, Inc.
- Pennonni
- Whitney Bailey Cox & Magnani, LLC
- RETTEW Associates, Inc.
- Wilson Consulting Group, PC

Shippensburg University graduated its first civil engineering class in 2021 and is on the cusp of being an accredited civil engineering program in the near future. After the students shared their projects, Mr. Eric Martz shared a presentation of what a typical engineering career path might look like for someone of his substantial talents and charisma. There were some great discussions, pizza, wings, soda, and sharing of contact information and opportunities for all. What could be better? We will look for opportunities for our membership to sponsor student attendance at some of our future events. Big thanks to Alan and Kevin for organizing such a great event to help us engage some of our own local engineering students here in Central PA. We look forward to building on this relationship with Shippensburg students in the future and also continuing to pursue other student chapters in the region.

Thanks,

Jason Hursh  
 ASHE Harrisburg Section President  
 LDG Project Manager

## Past Event



**A social was held at the Troegs Brewery. In Hershey, The featured speakers were Mark Compton and Brad Heigel from the Pennsylvania Turnpike Commission.**

## FUTURE EVENTS

### May/June

**Past President's / ASHE Awards  
 Scholarship Banquet  
 Venue: West Short Country Club  
 Date: June 6, 2023**

## ASHE COMMITTEES AND CONTACTS 2022-2023

Tim Bolden  
 & Jason Hursh

### Administration and Operations

Jason Hursh, PE  
 Alan Williamson, PE

### Finance & Audit

Chris Messner, PE

### Program & Fellowship

Alan Williamson, PE

### Scholarship & Student Development

Kevin Scheurich, PE

### Membership

Virginia Bailey

### Legislative & Government affairs

Paul McNamee, PE

### Marketing/ Communications

Kay Morris  
 Fawad Ahmed, PE

### Awards & Recognition

Paul McNamee, PE

## ASHE OFFICERS AND BOARD OF DIRECTORS

### 2022-2023 HARRISBURG SECTION



#### President

Jason Hursh, PE | Larson Design Group

#### First Vice President

Alan R. Williamson, PE | Pennsylvania Turnpike Commission

#### Second Vice President

Kevin Scheurich, PE | Pennsylvania Turnpike

#### Immediate Past President

Timothy A. Bolden, PE | Gibson-Thomas

#### Treasurer

Chris Messner, PE | GPI

#### Assistant Treasurer

W. Andrew Bitner, PE, PLS | Fairview Township

#### Secretary

Bob Leonard, PE | Erdman Anthony

#### Section Administrator

Nicholas Vereb | Michael Baker International

#### Northeast Regional Board Delegate:

Paul McNamee, PE | KCI Technologies

#### Directors - 1 year

Chad Decker, PE | Dawood

Chris Drda, PE | Gannet Fleming

Mark Greenholt, PE | Gannett Fleming

Patrick Kelly | JMT

Chris Messner, PE | GPI

#### Directors - 2 year

Joe Sutor, PE | Pennsylvania Turnpike Commission

Greg Soule | SAI Consulting Engineers

Virginia Bailey | McCormick Taylor

Matt Nulton, PE | JMT

Steve Guinter, PE | A. Morton Thomas

#### Directors - 3 year

Dannielle Derolf, | Dawood

Brian Daubenspeck, PE | TPD

Tyler Kerstetter | CDM Smith

Brian Pinamonti | KCI Technologies

Kevin Starner | Skelly & Loy, Inc

## VOLUNTEER FOR COMMITTEE MEMBERS

As most of you know, ASHE is an organization that is run by folks who volunteer their time. However, the reward for volunteering is tremendous.

*When you volunteer your time you:*

- Become a transportation industry advocate
- Participate in committees that are on the leading edge of industry initiatives and technology
- Develop a better understanding of the engineering business
- Create life-long relationships and friends

For these reasons, we ask all members to consider volunteering to participate in an ASHE committee. You do not have to be an Officer or on the Board of Directors to make a difference. If you are interested in helping out, our committees are listed below along with a contact. Please feel free to reach out to any committee that sounds interesting, or contact Jason Hursh, PE, ASHE President, and he will help hook you up with a committee in need of volunteer support.

### Thank you for considering getting involved!

#### Contact Info Updates & Membership Applications:

If your contact information changes, or if you wish to submit an application and payment to become an ASHE member, please contact Nick Vereb Section Administrator for ASHE Harrisburg. A copy of the new member application can be found at the end of this newsletter.

#### Michael Baker International

Attn: Nick Vereb

4431 N. Front Street, 2nd Floor  
Harrisburg, PA 17110-1709

Phone: (717) 221-2036

Email: [nicholas.vereb@mbakerintl.com](mailto:nicholas.vereb@mbakerintl.com)

#### New Membership Contact:

If you are a member that has recently joined and would like to talk to someone about what the ASHE Harrisburg Section does or how to get involved, please contact:

#### Virginia Bailey

Phone: (717) 540-6040

Email: [VMBailey@mccormicktaylor.com](mailto:VMBailey@mccormicktaylor.com)

Marketing Coordinator:

#### Skelly & Loy, Inc.

Attn: Kay Morris

449 Eisenhower Blvd. Suite 300  
Harrisburg, PA 17111

Phone: (717) 510-7775

Email: [kmorris@skellyloy.com](mailto:kmorris@skellyloy.com)

#### Profile Contact:

If you have news for ASHE Profile, please contact Fawad Ahmed, Profile Editor for ASHE Harrisburg:

#### Pennoni

Attn: Fawad Ahmed, PE  
5072 Ritter Road, Suite 102  
Mechanicsburg, PA 17055  
Phone: (717) 620-5966

Email: [fahmed@pennoni.com](mailto:fahmed@pennoni.com)

#### Find Us At:

Local: [www.harrisburg.ashe.pro](http://www.harrisburg.ashe.pro)

National: [www.ashe.pro](http://www.ashe.pro)

#### CAREER OPPORTUNITIES:

Recently posted on  
[www.harrisburg.ashe.pro/career.htm](http://www.harrisburg.ashe.pro/career.htm)

A. Morton Thomas & Assoc.  
Alfred Benesch & Company  
Applied Research Associates  
H.W. Lochner, Inc.  
HDR, Inc.  
JMT, Inc.  
Keller Engineers, Inc.  
Kimley-Horn and Associates  
Larson Design Group  
McCormick Taylor, Inc.  
Michael Baker Int'l.  
P. Joseph Lehman, Inc.  
Pennoni Associates  
Stahl Sheaffer Engineering  
Susquehanna Civil Inc.  
The Markosky Eng. Group  
Traffic Planning and Design  
Whitman, Requardt & Assoc.  
WBCM, LLC  
Wilson Consulting Group



Thank  
you!

THE ASHE HARRISBURG SECTION *wishes to thank*  
 THE FOLLOWING CENTURY CLUB MEMBERS FOR THEIR  
 SUPPORT DURING 2022-2023.

A. Morton Thomas and Associates, Inc.

A. D. Marble

AI Engineers, Inc.

Alfred Benesch & Company

American Engineers Group, LLC

American Geotechnical & Environmental Services, Inc.

Applied Research Associates, Inc.

Arora and Associates, PC

Arrow Land Solutions, LLC

Associated Pennsylvania Constructors

AWK Consulting Engineers, Inc.

Bergmann, PC

C.C. Johnson & Malhotra, PC

CDM Smith, Inc.

CDR Maguire, Inc.

Century Engineering, Inc.

Dawood Engineering, Inc.

Dewberry Engineers, Inc.

Erdman, Anthony and Associates, Inc.

Gannett Fleming, Inc.

Gibson-Thomas Engineering Co., Inc.

Great Valley Consultants

Greenman-Pedersen, Inc.

HDR, Inc.

HNTB Corp.

Herbert, Rowland & Grubic, Inc.

H.W. Lochner, Inc

JBC Associates, Inc.

Johnson, Mirmiran & Thompson, Inc.

KCI Technologies, Inc.

Keller Engineers, Inc

Kimley-Horn and Associates, Inc

KJ Consulting & Environmental Services, LLC

Larson Design Group, Inc.

McCormick Taylor, Inc.

McMahon Associates, Inc.

Michael Baker International

Modjeski and Masters, Inc.

Navarro & Wright Consulting Engineers, Inc.

New Enterprise Stone & Lime Co., Inc

NTM Engineering, Inc.

P. Joseph Lehman, Inc.

Pennoni

Pennsylvania Turnpike Commission

Prudent Engineering, LLP

Remington & Vernick Engineers, Inc.

RETTEW Associates, Inc.

RK&K

SAI Consulting Engineers, Inc.

Skelly and Loy, Inc.

Stahl Sheaffer Engineering, LLC

Stantec Consulting Services, Inc.

STV Incorporated

Sucevic, Piccolomini & Kuchar Engineering, Inc.

Susquehanna Civil Inc.

Susquehanna Valley Construction Corp.

The EADS Group, Inc.

The Markosky Engineering Group, Inc.

Traffic Planning and Design, Inc.

TranSystems Corporation

T.W. Consultants, Inc.

T.W. Engineering, Inc.

Urban Engineers, Inc.

Volkert, Inc.

Wallace Montgomery and Associates, LLP

Whitman, Requardt & Associates, LLP

Whitney Bailey Cox & Magnani, LLC

Wilson Consulting Group, PC



*The Century Club is comprised of ASHE members who have made a \$250 pledge to support the ASHE Harrisburg Section's activities.*

Century Club Members are prominently displayed in The Profile. The Profile is issued to approximately 400 Section Members in South Central Pennsylvania. The Century Club is an excellent opportunity to gain recognition among your colleagues, while actively supporting ASHE. Visit [www.harrisburg.ashe.pro/centuryclub.htm](http://www.harrisburg.ashe.pro/centuryclub.htm) or call Rob Yanosky, PE at 717-620-5955, to make your pledge.



## DISTRICT 8-0 MAR/APR 2023 ANTICIPATED LETTINGS

MPMS	County	State Route	Project Title	Short Narrative	Let Date	Range
106666	Adams	116	PA 116/Trib Willoughby Run	"Bridge improvement PA 116 (Fairfield Road) over Tributary to Willoughby Run Cumberland Township"	04/27/2023	\$500,000 to \$1,000,000
47519	Dauphin	2012	Laudermilch Road Bridge	"SR 2012 (Laudermilch Road) Bridge over Conrail Derry Township Bridge Replacement"	03/02/2023	\$7,500,000 to \$10,000,000
117674	Dauphin		2023-2024 Guiderail	"District guiderail repair contract Various SRs Districtwide"	03/23/2023	\$7,500,000 to \$10,000,000
117680	Dauphin		2023-2024 Lighting Maint Contract	"Various SRs Districtwide 2022/2023 Lighting Maintenance Contract"	03/23/2023	\$2,500,000 to \$5,000,000
92945	Dauphin	322	US 322 & Chambers Hill Rd	"Intersection of US 322 (Paxton Street) with SR 2019 (Grayson Road) and SR 3006 (Chambers Hill Road); Intersection of US 322 with Witmer Drive; and Intersection of SR 2019 (Grayson and Milroy Roads) Swatara Township Intersection Improvements"	04/13/2023	\$35,000,000 to \$40,000,000
113276	Dauphin	22	Cameron St Resurf	"Resurfacing Camerson St (SR 22()) from Wildwood Park Drive to Maclay St in the City of Harrisburg Dauphin County"	04/27/2023	\$1,000,000 to \$2,500,000
114316	Dauphin	22	Cameron/Maclay Intersec	"Intersection, Traffic Signal, and Pedestrian Facilities Improvements Cameron Street (SR 230) from Paxton Street (SR 3009) to Elmer ton Avenue (SR 3026) City of Harrisburg Dauphin County"	04/27/2023	\$1,000,000 to \$2,500,000
113277	Dauphin	230	Cameron St Resurf2	"Resurfacing Cameron St (SR 230) from Maclay St to Paxton St in the City of Harrisburg Dauphin County"	04/27/2023	\$1,000,000 to \$2,500,000
97831	Lancaster	2030	Lime Valley Rd Bridge PM	"SR 2030 (Lime Valley Road) over Pequea Creek Strasburg and West Lampeter Townships Bridge Preservation"	03/02/2023	\$500,000 to \$1,000,000
101002	Lancaster	1020	Meadow Valley Road Bridge	Bridge Replacement	03/30/2023	\$500,000 to \$1,000,000
111912	Lebanon		Lebanon City Resurfacing Phase 3 - Quentin Rd	"Quentin Rd/9th Street from Colebrook Road north to Maple Street and Maple Street from 9th Street to 10th Street Lebanon City, Lebanon County Resurface"	03/02/2023	\$1,000,000 to \$2,500,000
99081	Lebanon	2001	Cornwall & Wilhelm Inters	"Intersection Relocation Sr 2001 (Cornwall Road) at Wilhelm Ave to York Street North Cornwall Township and Lebanon City"	04/27/2023	\$1,000,000 to \$2,500,000
100391	Perry	3002	Horse Valley Rd over Ho 1	"State Route 3002 (Horse Valley Road) over Horse Valley Run Toboyne Township Culvert Replacement"	03/23/2023	\$500,000 to \$1,000,000
100394	Perry	3002	Horse Valley Rd over Ho 2	"State Route 3002 (Horse Valley Road) over Horse Valley Run Toboyne Township Culvert Replacement"	03/23/2023	\$1,000,000 to \$2,500,000
100449	Perry	4006	Buckwheat Val Rd over Bck	"State Route 4006 (Buckwheat Valley Road) over Buckwheat Run Tuscarora Township Bridge Replacement"	03/23/2023	\$1,000,000 to \$2,500,000
90922	York	74	Delta Road Resurf-ace 2	"PA 74 (Delta Road) from Chanceford Rd to Slab Rd Lower Chanceford York County Resurfacing"	04/27/2023	\$2,500,000 to \$5,000,000



All members that refer new members to join ASHE Harrisburg will be entered into a raffle at each lunch/dinner meeting to win a bottle of ASHE wine straight from Nissley Vineyards.

## New Members

### Ella Kukieva

Klienfelder  
Sponsor: Nick Vereb

### Maanitraj Gopalraj

Traffic Planning and Design, Inc.  
Sponsor: Douglas Stumpp

### Reyot Afework

Pennsylvania Turnpike Commission  
Sponsor: Fawn Cassel

### Nicholas Noss

Pennsylvania Turnpike Commission  
Sponsor: Joseph Sutor

### Alex Cline

William, Requardt & Associates, LLP  
Sponsor: Rob Wills

### Andrew Negley

Traffic Planning & Design, Inc  
Sponsor: Douglas Stumpp

### Corey Lewis

LaBella Associates  
Sponsor: Nicholas Vereb

### Edward Bosack

Alfred Benesch & Company  
Sponsor: Paul Wilke

### Harry Rainey

Quinn Consulting Services  
Sponsor: Nick Vereb

### Joshua Howard

Alfred Benesch & Company  
Sponsor: Joseph Botto

### Kenneth Ott

Susquehanna Civil, Inc.  
Sponsor: Keith Rupp

### Ryan Breithoff

CDR Maguire  
Sponsor: David Snively

### Travis Frey

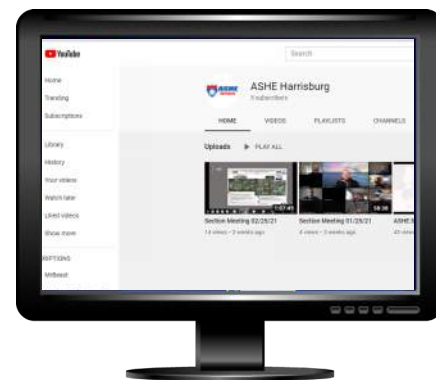
NTM Engineering, Inc.  
Sponsor: Lino Magnelli

### Zack Gregory

William, Requardt & Associates, LLP  
Sponsor: Rob Wills



[CLICK HERE TO VISIT THE ASHE WEBPAGE](#)



*Make sure to subscribe to the ASHE Harrisburg Youtube channel to watch the latest meetings*

[CLICK HERE TO CHECK IT OUT](#)

## ASHE MARCH CHARITY OF THE MONTH



For over 90 years, the United Methodist Home for Children has provided a caring environment for Central Pennsylvania's children in need. Originally a home for orphans, today the home is a refuge for children who are the victims of a negative social environment. Each year, UMHC programs provide emergency shelter and residential treatment for hundreds of children on their beautiful 56-acre campus in Shiremanstown PA.

United Methodist Home for Children, Inc.  
5120 Simpson Ferry Road | Mechanicsburg PA 17050

Please extend a helping hand and consider donating at the link below:

Visit [umhc.org/champions/donate/](http://umhc.org/champions/donate/)  
for more info

## ASHE FEBRUARY CHARITY OF THE MONTH



The Central Pennsylvania Food Bank is a nonprofit organization committed to reducing hunger in 27 counties across central Pennsylvania. By working with more than 1,000 local agencies and programs, we serve more than 200,000 people in need each month through our two Healthy Food Hubs, located in Harrisburg and Williamsport.

Our Mission Statement: fighting hunger, improving lives, strengthening communities

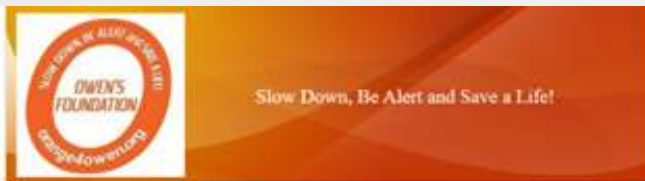
### OUR BOLD GOAL:

By 2025, our collaborative network will provide access to enough nutritious food for everyone struggling with hunger in each of the 27 counties we serve, and we will convene and nurture partnerships to make progress toward ending hunger.

Give funds, Give time, give food

**Central Pennsylvania Food Bank**  
([centralpafoodbank.org](http://centralpafoodbank.org))

## ASHE APRIL CHARITY OF THE MONTH



### MISSION STATEMENT

To promote pedestrian, driver, traffic and childhood safety and all aspects of community safety as well as raise awareness of the consequences of distracted driving practices.

*"We cannot change yesterday, but we can make a difference today and tomorrow."*  
-Karen Brezitski

Owen's Foundation  
P.O. Box 6084  
Harrisburg, PA 17112  
[orange4owen.org](http://orange4owen.org)



## ALFRED BENESCH & COMPANY

Full Service Engineering Firm

POTTSVILLE 570.622.4055  
WILKES-BARRE 570.914.9030

PITTSBURGH 724.741.4460  
ALLENTOWN 610.439.7066

**ENR**  
TOP 500 DESIGN FIRMS  
**#100**



www.benesch.com

## CCJM

C.C. Johnson & Malhotra, P.C.

Providing Engineering Solutions  
Since 1979

SBE/DBE/MBE Certified



### OUR SERVICES

- Buildings & Facilities
- Civil - Site
- Commissioning
- CM/CI Services
- Energy
- Smart Technology
- Surveying
- Transportation
- Water - Wastewater

### OUR OFFICE

4660 E Trindle Rd, Camp Hill, PA 17011  
MD | PA | IL | DC

CONTACT US :

[ccjm.com](http://ccjm.com)



**Geotechnical**  
**Transportation**  
**Structural**  
**Environmental**  
**Water Resources**  
**Surveying**  
**Construction & Testing**

MBE/DBE/SDB/SBE PA, MD, DE, NJ

Phoenixville, PA | Mechanicsburg, PA | Philadelphia, PA  
Largo, MD

1 (800) 733-1102

www.aegroup-llc.com



# DELIVERING SOLUTIONS THAT MOVE PEOPLE.

**2017 ASHE SW Penn Project of the Year Award Winner**

**Client:** PennDOT District 12-0  
**Project:** SR 0136-G10 over CSX Railroad and Little Chartiers Creek

Serving clients in New England, Pennsylvania, and Florida, CDR Maguire Engineering is a full-service infrastructure consulting firm that partners with clients to solve their most complex challenges, providing a full continuum of services.

- Project and program management
- Transportation design
- Construction engineering, management, and inspection services

**CDR | MAGUIRE ENGINEERING**

www.cdr-eng.com  
Ph: 412.322.8340  
E: info@cdrmaguire.com

www.kci.com

ENGINEERS  
PLANNERS  
SCIENTISTS  
CONSTRUCTION MANAGERS

**RISE TO THE CHALLENGE**

ISO 9001:2015 Certified | Employee-owned Since 1988

# CDM Smith

Passionate about our work, we design transportation infrastructure to help our clients create the right mobility solutions for their communities.

*We're continuing our growth in Pennsylvania with offices located in Harrisburg Lancaster Philadelphia*

listen. think. deliver.





## GREAT VALLEY CONSULTANTS

Engineers ♦ Architects ♦ Planners ♦ Consultants ♦ Surveyors

**Great Valley Consultants was founded in 1991 to provide quality, professional, consulting services in the following disciplines:**

Civil Engineering	Municipal Engineering
Municipal Planning	GIS Services
Waste Water Services	Construction & UCC Services
Water Supply Services	Architectural Services
Surveying/GPS Services	Design Build Services
Traffic Engineering	Highway Design

75 Commerce Dr  
Wyomissing, PA  
19610-3323  
Ph: 610-375-8822  
Fax: 610-375-8977



[www.greatvalleyconsultants.com](http://www.greatvalleyconsultants.com)



**Highway Design**  
**Bridge Design**  
**Traffic Engineering**  
**Environmental Services**

**1-800-738-8395**  
rettew.com |   

**PENNSYLVANIA**  
Mechanicsburg • Lancaster  
Williamsport • Pittsburgh  
Lehigh Valley • Conshohocken  
State College



**Delivering  
forward-thinking  
transportation  
solutions  
in the Commonwealth**

Allentown · Harrisburg · King of Prussia  
Philadelphia · Pittsburgh · York

RESPONSIVE PEOPLE  
CREATIVE SOLUTIONS



**Delivering results.  
Exceeding expectations.**

Keller Engineers is a highly skilled team of expert civil and structural engineers and surveyors dedicated to providing exceptional service through innovative design.

✓ Land Development	✓ Structural
✓ Construction Inspection	✓ Survey
✓ Water & Wastewater	✓ Transportation

Hollidaysburg, PA | State College, PA | Gettysburg, PA  
[www.keller-engineers.com](http://www.keller-engineers.com)

*Your partner for...*

- Highway Engineering
- Structural Engineering
- Environmental Services
- Transportation Planning
- Traffic Engineering Services
- Intelligent Transportation Services

*...and more, since 1967*

# Kimley»Horn

Expect More. Experience Better.

- HARRISBURG ■ PHILADELPHIA
- PLYMOUTH MEETING ■ PITTSBURGH
- PRINCETON ■ WHITE PLAINS ■ NEW YORK CITY
- BALTIMORE ■ TOWSON, MD ■ WASHINGTON, DC

*and 90+ other offices nationwide*



## New Enterprise Stone & Lime Co., Inc.

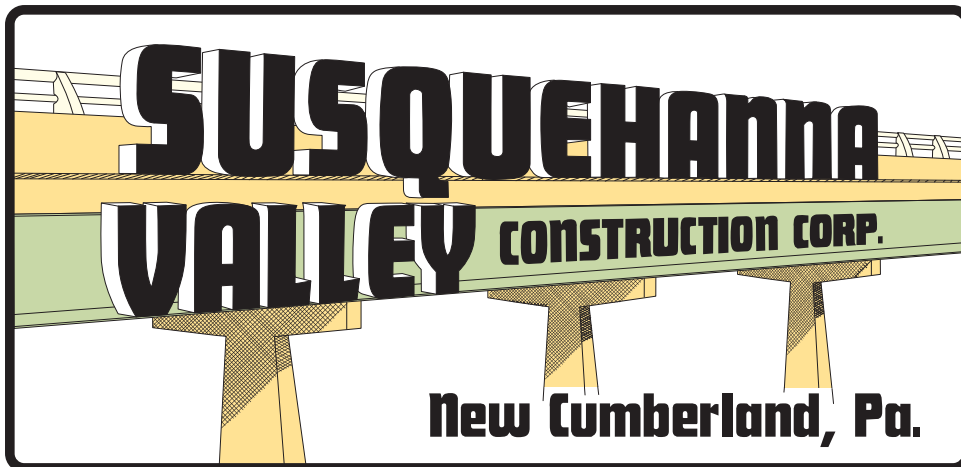
- ◆ Blacktop Paving ◆ Crushed Stone ◆ Ready-Mix Concrete
- ◆ Agricultural Lime ◆ Commercial & Residential Site Work
- ◆ Free Estimates ◆ Construction Supply Centers ◆

*For All Your Residential and Commercial Needs  
Serving Central Pennsylvania Since 1924*



814-766-2211  
www.nesl.com

PA H.I. Contractors Lic. #PA037617




**Advancing transportation  
infrastructure *since 1915***

*People Focused - Project Driven*

Philadelphia, PA • Pittsburgh, PA • York, PA

[www.wrallp.com](http://www.wrallp.com)



**SUSQUEHANNA CIVIL INC.**

HIGHWAY | ENVIRONMENTAL | STRUCTURES  
GEOTECHNICAL | SURVEY | WATER RESOURCES

[SQCIVIL.COM](http://SQCIVIL.COM) | 717.846.7151

**WALLACE MONTGOMERY**  
ENGINEERS | PLANNERS | SURVEYORS | CONSTRUCTION MANAGERS

*Sustainable Infrastructure Through* **INNOVATIVE ENGINEERING**

[www.wallacemontgomery.com](http://www.wallacemontgomery.com)  
Maryland | Delaware | Pennsylvania | Virginia

**NAVARRO & WRIGHT**  
CONSULTING ENGINEERS, INC.

CELEBRATING **25** Years

Performance. Integrity. Quality. *Results.*

Transportation • Geotechnical • Environmental  
Structural • Cultural Resources • Survey & Mapping  
Construction Inspection • Site/Civil Infrastructure  
Landscape Architecture • Municipal Engineering  
Water/Wastewater • AASHTO Certified Laboratories

**Corporate Office:**  
151 Reno Avenue  
New Cumberland, PA 17070  
717.441.2216  
[navarrowright.com](http://navarrowright.com)

**Branch Offices:**  
Philadelphia, Allentown,  
Pittsburgh, PA  
Sparks, MD  
Smyrna, DE


**ARA**
**TRANSPORTATION**

- Deflection Testing
- Pavement Friction Testing
- Pavement Evaluation & Design
- Pavement ME Design
- Asset Management


[www.ara.com](http://www.ara.com)

Contact Lax Premkumar at  
 (717) 975-3550 or [lpremkumar@ara.com](mailto:lpremkumar@ara.com)


**KJ CONSULTING &  
 ENVIRONMENTAL  
 SERVICES**

DBE/WBE/WOSB Certified

Committed to providing quality  
 inspection services for our clients  
 and teaming partners


*SR 8 Venango County*

[www.kj-consultants.com](http://www.kj-consultants.com)  
 814.209.7337



**WHITNEY BAILEY COX & MAGNANI, LLC**  
 100 Sterling Parkway, Suite 108  
 Mechanicsburg, PA 17050  
 MAIN 717.691.4708 • FAX 717.691.4749



*SR 1003-022 Design-Build Bridge Replacement over Little Swatara Creek, Lebanon, PA*

[www.wbcm.com](http://www.wbcm.com)



**CENTURY**  
 ENGINEERING  
 A Kleinfelder Company


**Bright People.  
Right Solutions.**

200 Airport Road  
 New Cumberland, PA 17070  
[www.CenturyEng.com](http://www.CenturyEng.com)  
[www.Kleinfelder.com](http://www.Kleinfelder.com)  
 717.901.7055

## DESIGNING FOR THE FUTURE...



Highways & Bridges  
 Site Development  
 Surveying & Mapping  
 Drone Services  
 Environmental  
 Water/Wastewater  
 Construction Inspection  
 Architecture  
 Electrical Design  
 Planning



800.626.0904  
[www.eadsgroup.com](http://www.eadsgroup.com)

**THE  
EADS  
GROUP**

Engineering, Architecture & Design Services

Altoona • Clarion • Johnstown • Lewistown • Pittsburgh  
 New Brighton • Somerset • Cumberland • Morgantown

## T. W. CONSULTANTS, INCORPORATED

*Providing Quality Engineering & Planning Services For Over 30 Years*



Construction  
 Management  
 Inspection &  
 Documentation  
 GPS/Surveying

5500 Corporate Drive ♦ Suite 300 ♦ Pittsburgh, PA 15237 ♦ (412) 369-7500  
 4811 Jonestown Road ♦ Suite 224 ♦ Harrisburg, PA 17109 ♦ (717) 540-5600



## Bridging the gap between idea + achievement

At HDR, we're helping our clients push open the doors to what's possible, every day. We're proud to support the ASHE Harrisburg Section.

[hdrinc.com](http://hdrinc.com) | Mechanicsburg 717.516.3144



15 YEARS  
 NEWELL  
 TERESKA &  
 MACKAY  
 ENGINEERING

Hydrologic & Hydraulic Modeling

Stormwater Planning & Design

Bridge Design & Inspection

Environmental Services

Transportation Services

Technical Training & Course Development

Civil/Site Services

DBE in PA, MD, DE, and WV

Dillsburg · Philadelphia State College · Wayne

[www.ntmeng.com](http://www.ntmeng.com)

Founded in 1995, American Geotechnical & Environmental Services, Inc. has grown to be one of the largest specialty geotechnical consultants in the northeastern United States, providing geotechnical engineering services on public infrastructure projects. With a staff of 35 Engineers and 25 Geologists, of which 46 are certified test boring inspectors, we can assist in any of your current and future projects.



**American Geotechnical & Environmental Services, Inc.**





Providing quality engineering solutions for the transportation community for over 40 years.

Willow Grove Interchange, PTC,  
Upper Moreland Twp, Montgomery Co, PA

@arorapc  
#arorapc  
www.arorapc.com

**ARORA and ASSOCIATES, P.C.**  
Consulting Engineers

**40**  
of Excellence

4813 Jonestown Road, Suite 211  
Harrisburg, PA 17109  
(717) 920-0222

# ARROW

LAND SOLUTIONS, LLC

- Right-of-Way & Real Property Acquisition
- Right-of-Way Plan Checks/Reviews
- Project Planning & Management
- Relocation Assistance Services
- Appraisal Services
- Title Abstracting & Settlements
- Preliminary Property Investigation
- Quality Assurance & Project Support
- Successful Design Build Teaming
- Property Management/Asbestos Inspection
- Electric Transmission Easements
- Pipeline Easement
- Public Relations Services

**TARGETING YOUR  
RIGHT-OF-WAY  
ACQUISITION NEEDS**

ALTOONA • HARRISBURG • FORTY FORT • DELMONT  
STATE COLLEGE • LEWISBURG • LANCASTER  
WWW.ARROWLANDSOLUTIONS.COM  
866.944.8006

# DAWOOD

CELEBRATING 30 YEARS

*Improving Infrastructure  
One Asset At A Time*

HIGHWAYS | TRAFFIC | BRIDGES | DESIGN-BUILD

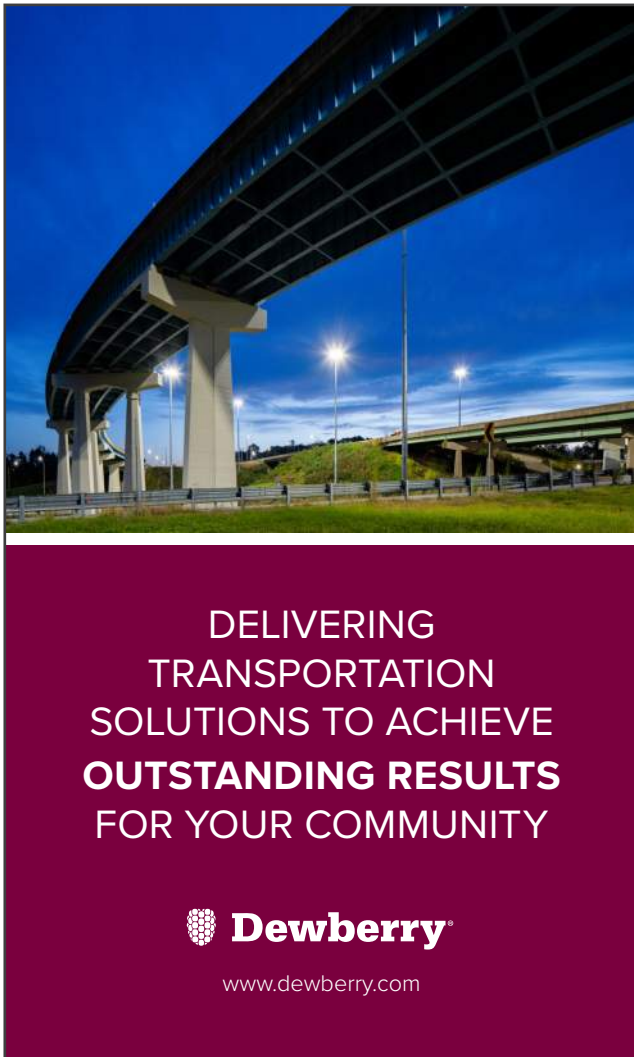
**Headquartered in Harrisburg, PA**  
**www.dawood.net**




**SHAPING THE FUTURE OF INFRASTRUCTURE**

Insight, innovation and imagination drive us to rethink the future of infrastructure, helping clients navigate their most complex challenges and making a positive impact in the communities where we live and work.


**HNTB**  
The HNTB Companies  
Infrastructure Solutions  
hntb.com  

**DELIVERING TRANSPORTATION SOLUTIONS TO ACHIEVE OUTSTANDING RESULTS FOR YOUR COMMUNITY**

 **Dewberry**  
www.dewberry.com



  
**MARKOSKY**



Scan our QR Code to find us online!

-  Environmental Services
-  Civil Engineering Services
-  Construction Services

Ligonier, PA                      Steubenville, OH  
York, PA                              Charleston, WV



# HRG

**Herbert, Rowland & Grubic, Inc.**  
**Engineering & Related Services**

**AN EMPLOYEE-OWNED COMPANY**

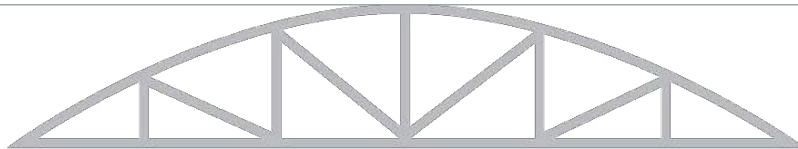


ARCHITECTS, ENGINEERS,  
 & CONSULTANTS

**Larson Design Group**

[larsondesigngroup.com](http://larsondesigngroup.com)

Philadelphia Harrisburg Lititz Selinsgrove Williamsport Pittsburgh



**P. JOSEPH LEHMAN, INC.**  
 CONSULTING ENGINEERS

Rehabilitation of Rhodes Mill Bridge over Middle Creek  
Freedom Township, Adams County, PA




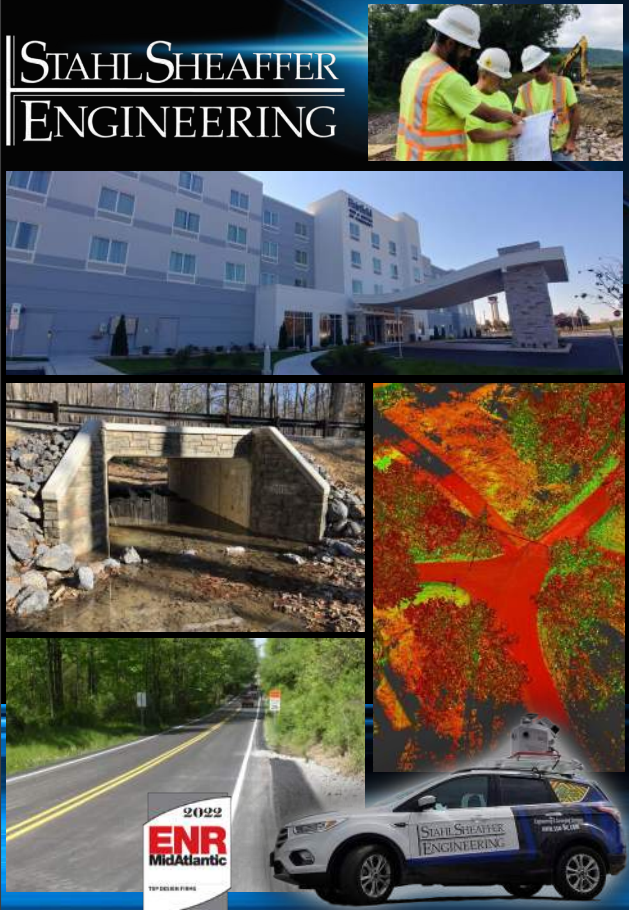
**Pennoni** is pleased to support ASHE Harrisburg

ENGINEERS, SCIENTISTS, SURVEYORS, & PLANNERS | [www.pennoni.com](http://www.pennoni.com)




McCormick Taylor is a full-service engineering firm providing creative design, planning, and environmental solutions to the challenges of everyday life.

[mccormicktaylor.com](http://mccormicktaylor.com)

**CIVIL & STRUCTURAL ENGINEERING**

Local Office: 4431 N. Front Street, Suite 102, Harrisburg, PA  
17110 | 717.510.7222 | [www.stahlsheaffer.com](http://www.stahlsheaffer.com)



**SKELLY AND LOY** **SKELLY AND LOY, INC., A Terracon Company**  
**Engineering - Environmental Consultants**

A Terracon Company

<p>NEPA Studies &amp; Documentation  Wetlands &amp; Threatened &amp; Endangered Species  Archaeological &amp; Historic Resources Investigations  Noise &amp; Air Quality Studies  Wetland / Ecosystem Restoration Design  Asbestos, Mold, Water Testing</p>	<p>Clean Fill/Regulated Fill  Water Resources Studies  Geo-Environmental Investigations &amp; Remediation  Environmental &amp; Civil Engineering  Land Use &amp; Transportation Planning  Stormwater Management  Natural Stream Design</p>
---	--

Now Offering:  
Facilities — Geotechnical — Materials

Sandra K. Basehore, President/Regional Office Manager  
sbasehore@skellyloy.com - 800-892-6532 • www.skellyloy.com

PROFESSIONAL. PRECISE. PASSIONATE.

Asset Management  
Municipal Representation  
Construction Phase Services  
Funding Strategies and Planning  
Green Transportation Alternatives  
Transportation Project Design and Delivery

Positions Now Available  
Apply online @ [WilsonEP.com/careers-1](http://WilsonEP.com/careers-1)  
Mechanicsburg, PA | 717.591.3070



**WILSON** | CONSULTING GROUP  
 CIVIL ENGINEERING + PLANNING



An ENR 500 Top Design Firm serving the eastern United States since 1989



**Services:**

- » Highway Design
- » Bridge Design & Inspection
- » Construction Management & Inspection
- » Municipal Engineering Services
- » Traffic Signal & ITS Systems Design
- » Transportation Planning & Permitting
- » Multimodal, Complete Streets & Mobility Services
- » Transportation Management & Operations
- » Environmental Services & Permitting
- » Expert Witness Support for Crash Investigations

Moving Forward Together®



Est. 1989  
**TPD**  
 TRAFFIC PLANNING AND DESIGN, INC.

www.TrafficPD.com



IS A PROUD SUPPORTER OF THE

**ASHE Harrisburg Century Club**

We are a transportation focused civil engineering and construction management firm with offices in:

- Lemoyne, PA
- Newtown Square, PA
- Pittsburgh, PA
- Lake Mary, FL





**AMERICAN SOCIETY OF HIGHWAY ENGINEERS**  
INCORPORATED 1958, HARRISBURG, PA.

**MEMBERSHIP APPLICATION**

Name \_\_\_\_\_ Date \_\_\_\_\_  
(first) (middle) (last)

**RESIDENCE ADDRESS:**

Street \_\_\_\_\_ City \_\_\_\_\_  
State \_\_\_\_\_ Zip/Postal Code \_\_\_\_\_  
Phone \_\_\_\_\_ E-Mail \_\_\_\_\_  
Fax \_\_\_\_\_

**YOUR EMPLOYER:**

Company Name \_\_\_\_\_ Job Title \_\_\_\_\_  
Street \_\_\_\_\_ City \_\_\_\_\_  
State \_\_\_\_\_ Zip/Postal Code \_\_\_\_\_  
Phone \_\_\_\_\_ E-Mail \_\_\_\_\_  
Fax \_\_\_\_\_

Please send my American Society of Highway Engineers correspondence to my  Residence  Work Place

**EDUCATIONAL BACKGROUND:**

**High School:**

High School \_\_\_\_\_  
Course \_\_\_\_\_ Graduation Date (m / y) \_\_\_\_\_

**Undergraduate Degree:**

College / University \_\_\_\_\_  
Major \_\_\_\_\_ Graduation Date (m / y) \_\_\_\_\_

**Graduate Degree:**

College / University \_\_\_\_\_  
Major \_\_\_\_\_ Graduation Date (m / y) \_\_\_\_\_

**PROFESSIONAL LICENSURE:**

Registered Engineer  Land Surveyor-in-Training  Not Licensed  
 Registered Land Surveyor  Engineer-in-Training  Other \_\_\_\_\_

Primary State: \_\_\_\_\_ Registration No.: \_\_\_\_\_ Certification Date: \_\_\_\_\_



## MEMBERSHIP APPLICATION (continued)

Total Years Experience in the Highway Industry (briefly describe) \_\_\_\_\_

Work Sector (check one):

DOT \_\_\_\_\_ City \_\_\_\_\_ County \_\_\_\_\_ Federal \_\_\_\_\_ Consultant \_\_\_\_\_ Contractor \_\_\_\_\_ Supplier \_\_\_\_\_ Other (explain) \_\_\_\_\_

Work Specialty (check one):

Design \_\_\_\_\_ Construction \_\_\_\_\_ Inspection \_\_\_\_\_ Survey \_\_\_\_\_ CADD \_\_\_\_\_ Maintenance \_\_\_\_\_ Other (explain) \_\_\_\_\_

If accepted, I will abide by the Constitution, By-Laws and Code of Ethics of American Society of Highway Engineers

Signature \_\_\_\_\_ Date \_\_\_\_\_

Sponsoring Member \_\_\_\_\_

(Print)

(Signature)

### FOR USE BY SECTION:

APPLICATION FOR:  ADMISSION  TRANSFER  REINSTATEMENT (LAPSE WITHIN CURRENT OR PRIOR YEAR)

Received by Section \_\_\_\_\_

Action of Membership Committee \_\_\_\_\_

Action of Board of Directors \_\_\_\_\_

Above signatures of Sponsoring Member, Membership Committee and at least one Board of Directors member, indicate that the Applicant has been evaluated and their experience as indicated on this application has been verified and all agree with admission to membership.

### FOR USE BY NATIONAL SOCIETY

Approved \_\_\_\_\_ Date \_\_\_\_\_

Initiation Fee Received and Recorded \_\_\_\_\_

No Fee for Transfer \_\_\_\_\_

**AMERICAN SOCIETY OF HIGHWAY ENGINEERS**

Kindly make your check payable to: ASHE Harrisburg Section in the amount of \$45.00 and mail to:

ASHE Harrisburg Section  
 Attn: Secretary  
 P.O. Box 322  
 Camp Hill, PA 17011-0322




**ASHE**  
**Harrisburg**

**ASHE CENTURY CLUB**  
**June 1, 2023 – May 31, 2024**

Amount: \$250.00  
 Date due: May 31, 2023

-----

**For checks, make payable to ASHE – Harrisburg Section and return along with the completed form to:**

Gregory W. Soule, PE  
 SAI Consulting Engineers  
 Two Lemoyne Drive, Suite 101  
 Lemoyne, PA 17043-1222

**Firm Name:** \_\_\_\_\_

**Address:** \_\_\_\_\_

**Contact Person:** \_\_\_\_\_ **Job Title:** \_\_\_\_\_

**Phone:** \_\_\_\_\_ **E-mail:** \_\_\_\_\_

**Company URL:** \_\_\_\_\_

-----

**For credit card payments, enter the required information at**  
<https://ashe-harrisburg.regfox.com/ashe-harrisburg-section-century-club-2023>.

-----

**👉 PLEASE SEND AN ADOBE FILE OF YOUR COMPANY'S COLOR OR BLACK & WHITE, ONE-QUARTER PAGE AD (3" X 5") VIA E-MAIL TO:**  
[gsoule@saiengr.com](mailto:gsoule@saiengr.com)