

DISTRICT 8 ASHE PRESENTATION

April 23, 2024

KEVIN M. KEEFE, P.E., DISTRICT EXECUTIVE

RICHARD A. RESINGER, P.E., ADE - DESIGN

BENJAMIN E. SINGER, P.E., PORTFOLIO MANAGER



Today's Agenda

- District 8 Executives
- Changes in PennDOT
- District 8 Profile
- Construction Accomplishments
- Linda Atkinson Golden Hammers
- ASHE Project of the Year
- Design Updates
- Portfolio Manager Updates
- Parts/Work Order Closeouts
- Upcoming Agreements
- Questions



PennDOT District 8 Executives



Kevin M. Keefe, PE - District Executive

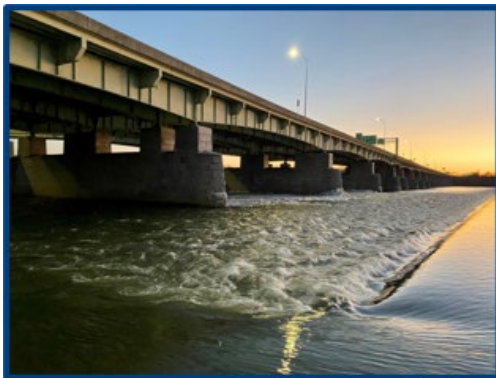
*"The strength of the team is each individual member.
The strength of each member is the team."*



Richard A Reisinger, PE
Assistant District Executive
(Design)

Michael E. Reeder, PE
Acting Assistant District Executive
(Construction)

Dale A. Good
Assistant District Executive
(Maintenance)



Changing Times for PennDOT

New Administration:

- Secretary – Michael Carroll
- Executive Deputy Secretary – Larry Shifflet
- Deputy Secretary for Highway Administration – Michael Rebert

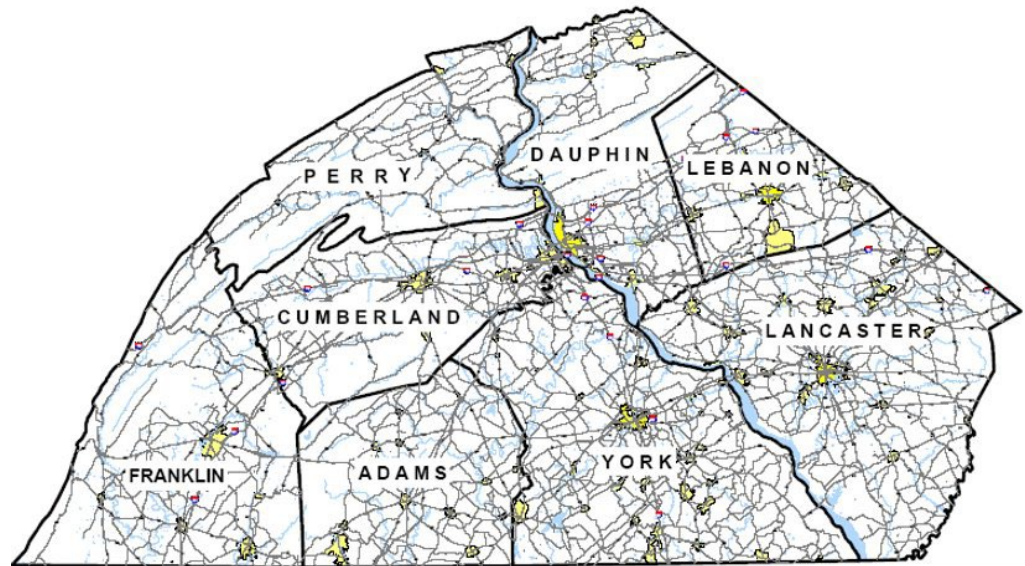
District Office:

- Acting Assistant District Executive (ADE) for Construction – Michael Reeder
- Principal ACE's:
 - Mike Dieter – Cumberland/Dauphin/Perry
 - Barb Karsok-Anderson – Lancaster/Lebanon
 - Terry Kohler – Adams/Franklin/York
- Acting Construction Services Engineer – John Eisenhart
- District Traffic Engineer – Chris Flad
- District Permits Manager (HOP) - Eric Kinard



District 8 Profile

- 8 Counties South-Central Region
- 3421 Bridges
- 5230 Miles of Roadway
- Six Planning Partners
- 1110 Employees
- 316 Municipalities
- 91 Public Schools



Construction Accomplishments

SR 462 Market St – York



SR 22-078 - Dauphin



SR 4010-013 - Perry



SR 4003-13 - Lancaster



SR 15-034 - Adams



Construction Accomplishments

Walnut St. Extension (Goat Path) Lancaster



Linda Atkinson Golden Hammer Awards

- Project Considerations:
 - Delivered on time
 - Within Budget
 - Overall Quality
 - Challenges to Overcome
 - Innovations
- < \$5 Million
- > \$5 Million



Linda Atkinson Golden Hammer Awards

- < \$5 Million Nominees
 - SR 0116-051 Adams County
 - SR 116 Bridge over Conewago Creek
 - SR 0083-102 Dauphin County
 - I-83 Resurfacing Exit 43 - 48
 - SR 4003-013 Lancaster County
 - Kinderhook Road over Little Chiques Creek
 - SR 4010-013 Perry County
 - SR 4010 Over Little Buffalo Creek
 - SR 0851-022 York County
 - Bryansville Road Bridge



Linda Atkinson Golden Hammer Awards

- < \$5 Million Winner
 - SR 0851-022 York County
 - Bryansville Rd Bridge
 - PM – Heidi Mertz
 - Lead Designer
 - Erdman, Anthony, Associates, Inc.
 - PACE – Terry Kohler
 - ACE – Justin Enck
 - Consultant Insp Firm
 - JMT – Pat Kelly
 - JMT – Bob Taylor
 - Contractor
 - J.D. Eckman, Inc.



Linda Atkinson Golden Hammer Awards

- > \$5 Million Nominees
 - SR 0015-034 Adams County
 - US 15 Resurfacing
 - SR 0022-078 Dauphin County
 - I-81 River Relief Bridges #2
 - SR 0222-084 Lancaster County
 - US 222 Resurfacing
 - SR 0462-052 York County
 - Market Street Bridge Over Mill Creek



Linda Atkinson Golden Hammer Awards

- > \$5 Million Winner
 - SR 0462-052 York County
 - Market Street Bridge Over Mill Creek
 - PM – Ben Singer
 - Lead Designer
 - Stantec Consulting Services, Inc.
 - PACE – Terry Kohler
 - ACE – Justin Enck
 - Consultant Insp Firm
 - JMT – Daryl Barner
 - TW – Justin Latchford
 - Contractor
 - Clearwater Construction, Inc.



ASHE Project of the Year!



ORGANIZATION

MEMBERSHIP

NEWS

NATIONAL
CONFERENCE

OPERATIONS &
RESOURCE CENTER

2023 Project of the Year Winner - Under \$20 Million - North East Region

US 322 Diverging Diamond Interchange

Submitted by the Harrisburg Section

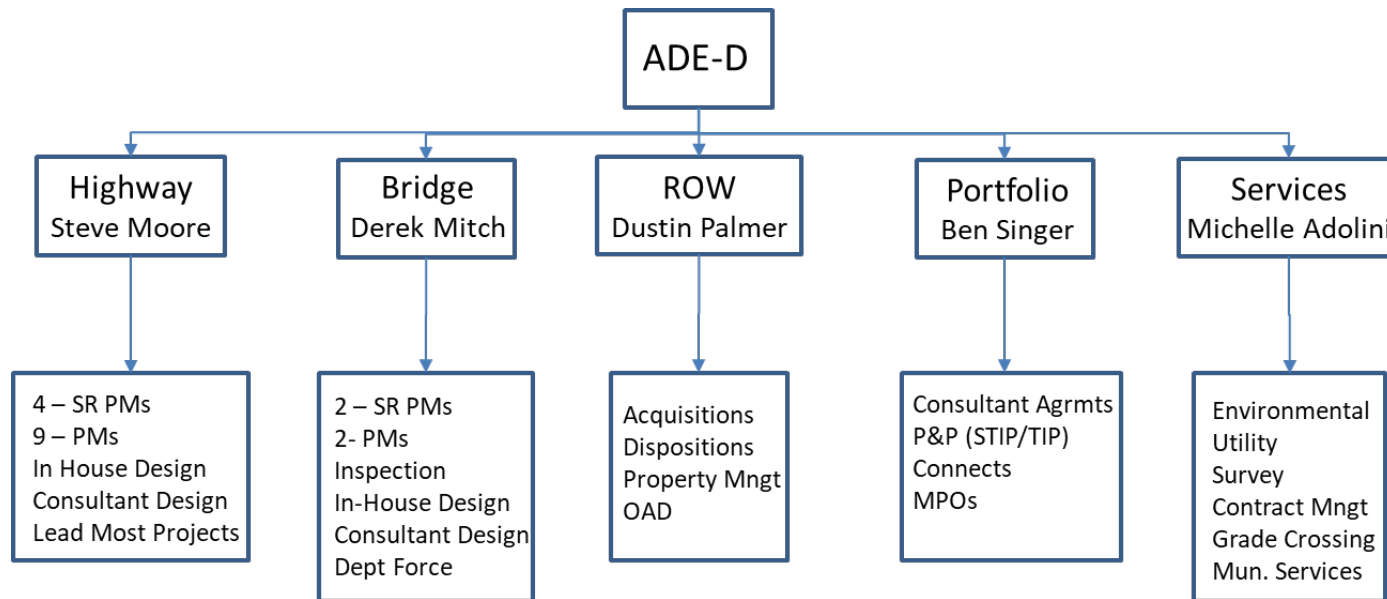
Construction Cost	\$10,700,000
Project Location	Ephrata, Pennsylvania
Project Owner	Pennsylvania Department of Transportation
Project Designer	Whitman, Requardt & Associates
Contractor	J. D. Eckman, Inc.
Completion Date	June, 2022



ADE – DESIGN UPDATES

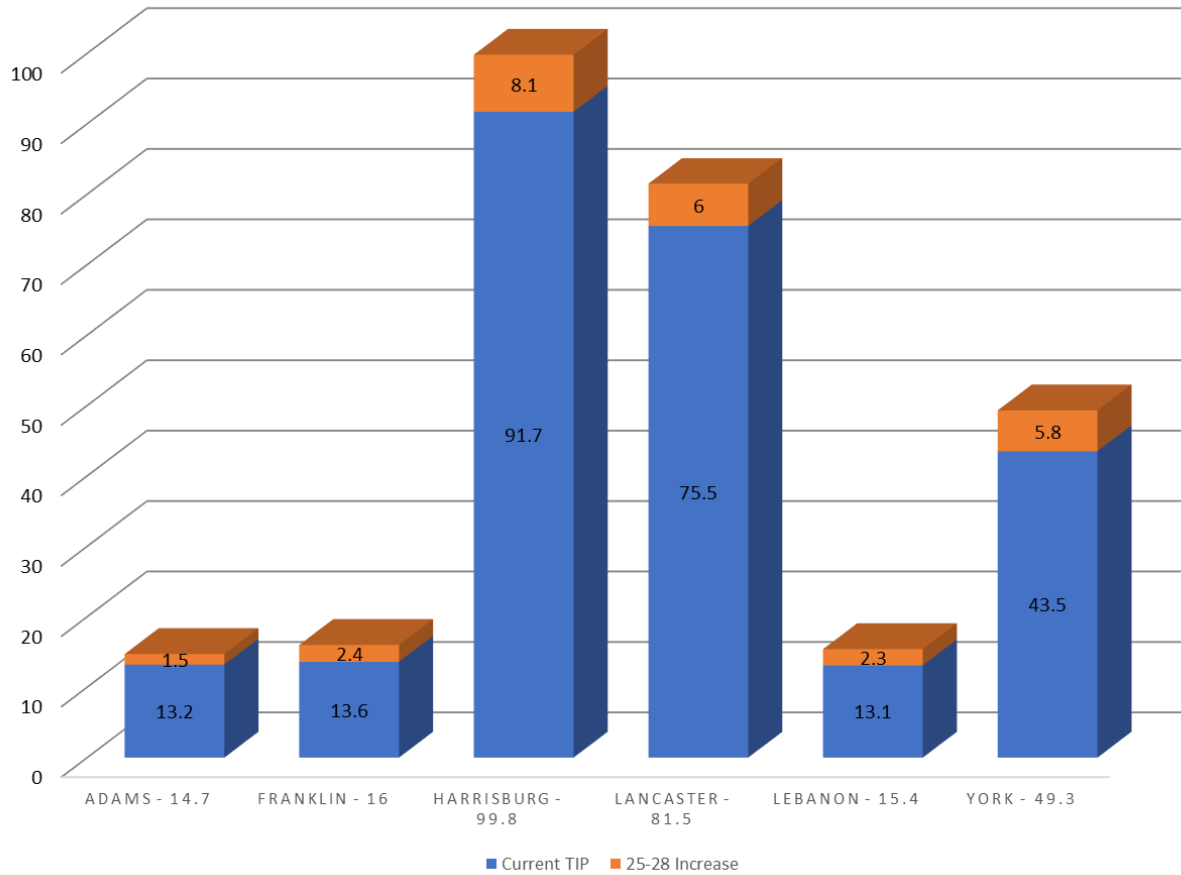
- Staffing Changes / Updates

- Chiara Orsini – Permit Coordinator
- Allison Webster – H&H Coordinator



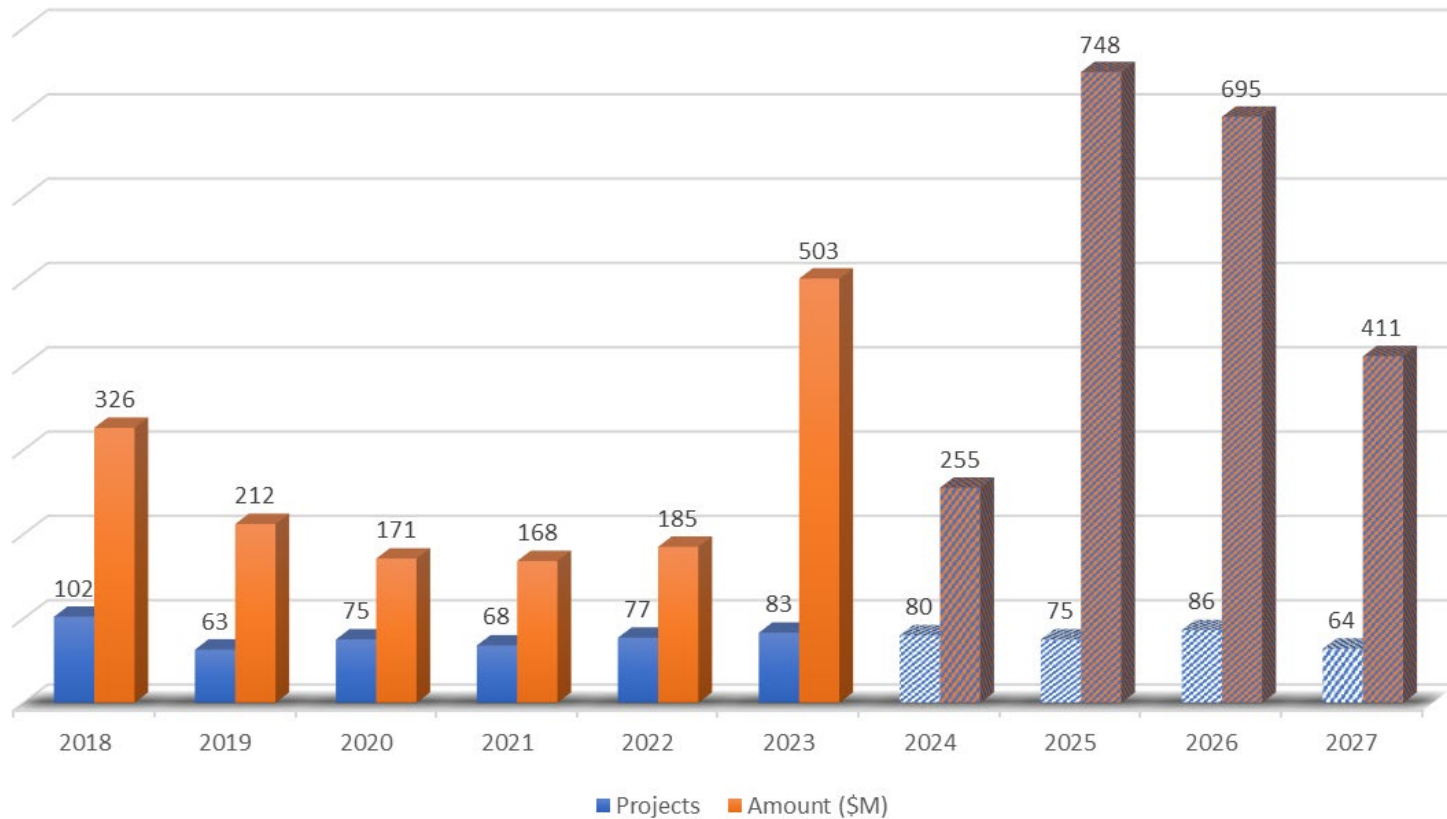
ADE – DESIGN UPDATES

AVERAGE FY FUNDING LEVELS BY MPO (\$M)



ADE – DESIGN UPDATES

Project Lettings



ADE – DESIGN UPDATES

- 2023 Letting Results

- Our Low Bid vs. PS&E was 11.2% over
- Statewide Average – 8.6%

~\$50 Million in funds moved from potential future projects to cover bid increases means limited new starts



- What to Do?

- Monitor Cost Drivers
- Quarterly Cost Containments = no secrets

LESS MONEY
MORE PROBLEMS



ADE – DESIGN REMINDERS

- Be Proactive when asking Questions
- Provide Options and make Recommendations
 - Don't just present the problem
 - What would you do if in our role?
 - How can we defend the decision?
 - We are relying on you to be an expert
- Serve as an extension of District Staff
- Remember you “Represent” PENNDOT too!



PORTFOLIO MANAGER UPDATES

- Communication is improving
- Cost Estimates updates
- Design the project to what is scoped
- Right people working on the Projects
- District PMC Meeting



PORTFOLIO MANAGER UPDATES

- Consultant PM's
- SOI's
- Marketing Meetings
- Feedback from Consultants
- Parts/WO Closeouts



Parts/Work Order Closeouts

Agreement	Type	Part/WO	Status	Name
E00187	OE-PS	14	Idle	SR 0116-051 Construction Consultation
E00915	OE-PS	7	Expired	I-83 (South Bridge) STUDY
E03247	OE-PS	6	Idle	SR 462-038 Br Rehab Modification & Interim Repairs
E04018	PS	6	Expired	Final Design - SR 3070-004 - York
E04333	PS	10	Expired	Preliminary Engineering SR 1015-016
E04333	PS	12	Expired	Construction Consultation SR 1015-016
E04333	PS	13	Expired	Final Design SR 1015-016
E04350	PS	2	Expired	Preliminary Engineering SR 3038-003
E04350	PS	6	Expired	Preliminary Engineering for SR 3018-003
E04744	PS	1	Expired	Project Initiation and E&E Scoping
E04744	PS	5	Expired	In Depth Inspection
E05367	PS	1	Expired	Project Initiation and E&E Scoping - SR 1017-007
Records 1 to 12 of 12				



Upcoming Agreements

- Districtwide Bridge Inspection - 2024
 - E06003
- Bridge Maintenance Contract - 2024
 - E05546
 - Lancaster and Lebanon Counties



QUESTIONS??????

