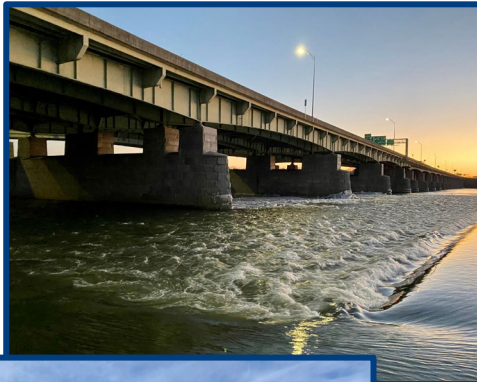


PENNDOT DISTRICT 8-0



Christopher J. Kufro, PE District Executive

Richard A Reisinger, PE
Assistant District Executive
(Design)

Kevin M. Keefe, PE
Assistant District Executive
(Construction)

Dale A. Good
Assistant District Executive
(Maintenance)



*“The strength of the team is each individual member.
The strength of each member is the team.”*





Adams County



Cumberland County



Franklin County



York County

- 8 Counties South-Central Region
- 3416 Bridges
 - **289 Poor/SD Bridges**
 - **SD Deck Area = 4.0%**
 - 91 P3 Bridges
- 5230 Miles of Roadway
- Six Planning Partners
- 1110 Employees
- 316 Municipalities
- 91 Public Schools



- 37.3 MDVMT, 2nd Highest in PA
- **Lancaster Highest w/in District 8**
- Highest Daily Truck Miles Traveled
- I-81: 10.03 MDVMT (232.76)
- I-83: 3.22 MDVMT (55.47)



Dauphin County



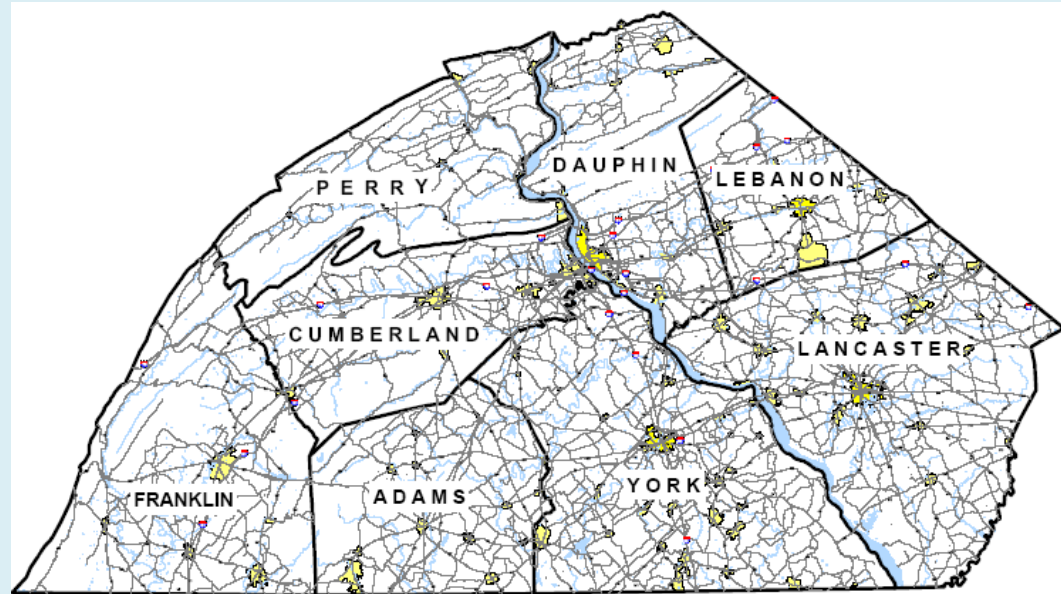
Lancaster County



Lebanon County



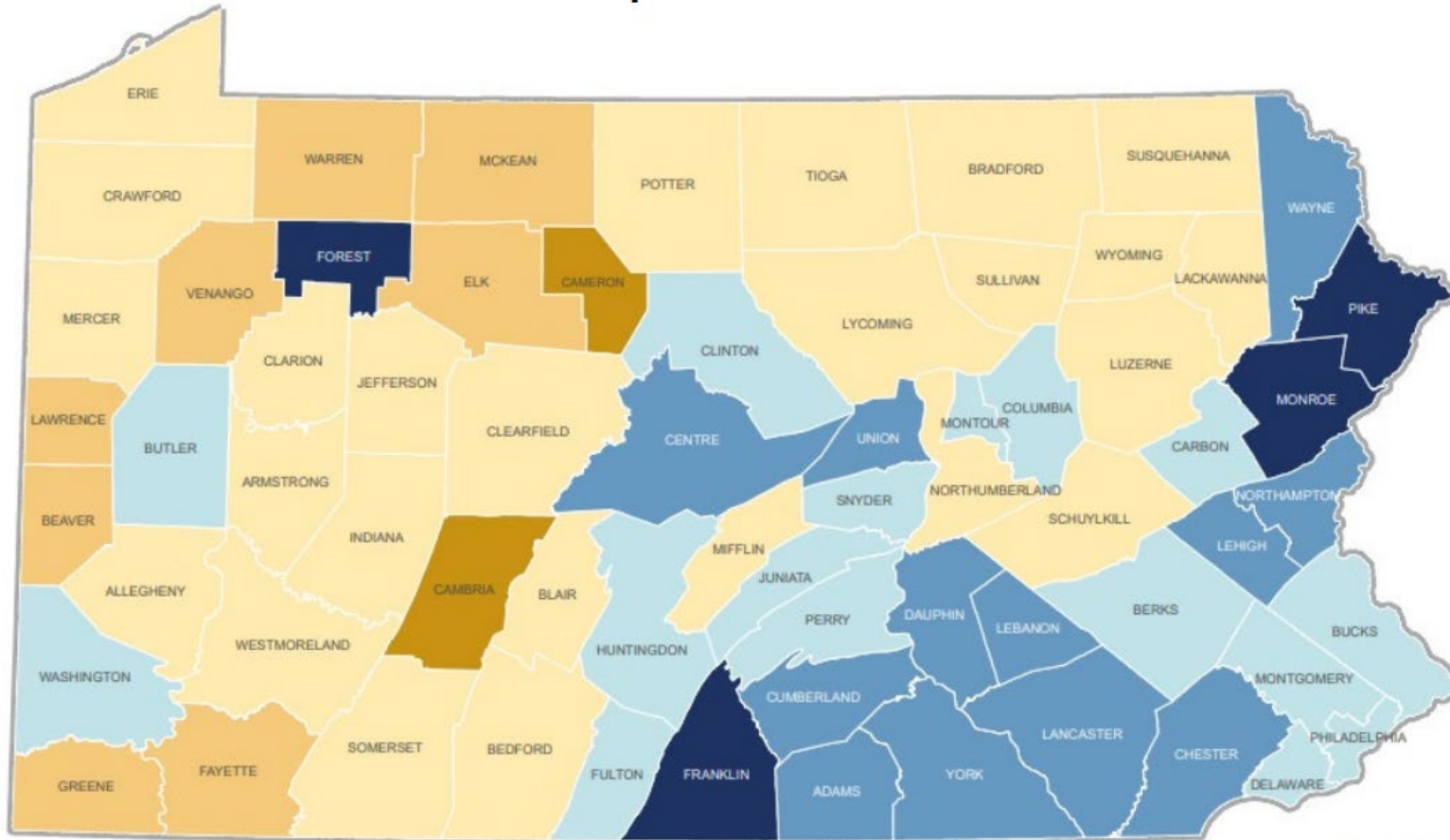
Perry County



NOTES:

DISTRICT ASSET MANAGEMENT/PLANNING AND FUTURE

Forecasted Population Growth 2050



Woods & Poole

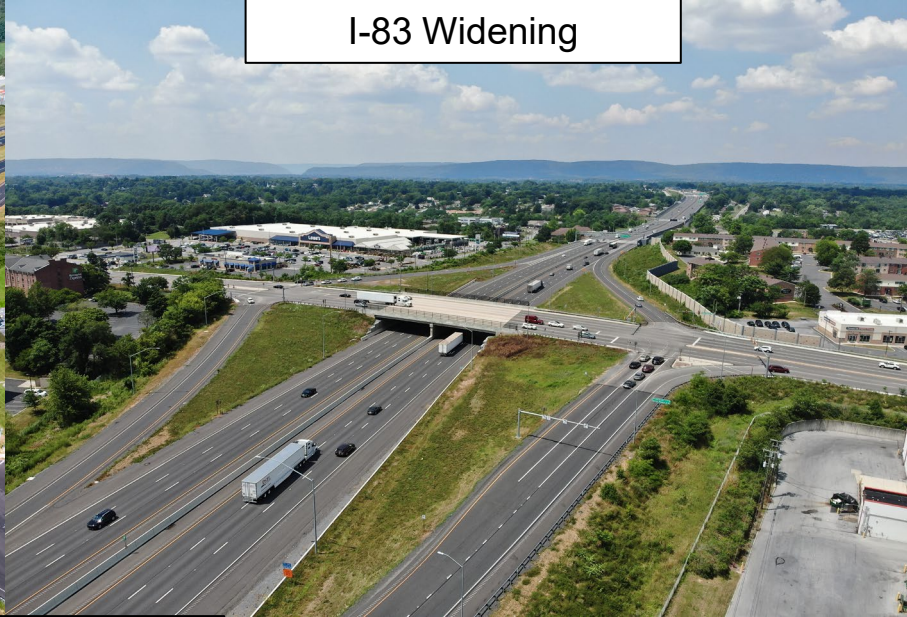


CONSTRUCTION ACCOMPLISHMENTS

Ephrata DDI



I-83 Widening



Routes 94/394 Roundabout



York DDI



Life, Liberty and the Pursuit of Happiness

Safe Harbor



ACTIVE CONSTRUCTION PROJECTS

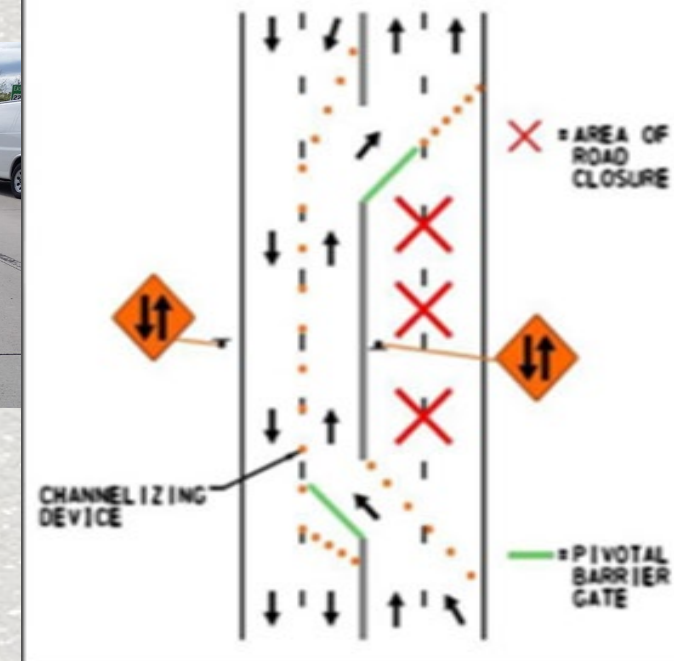


ORGANIZATIONAL SMART PRACTICES

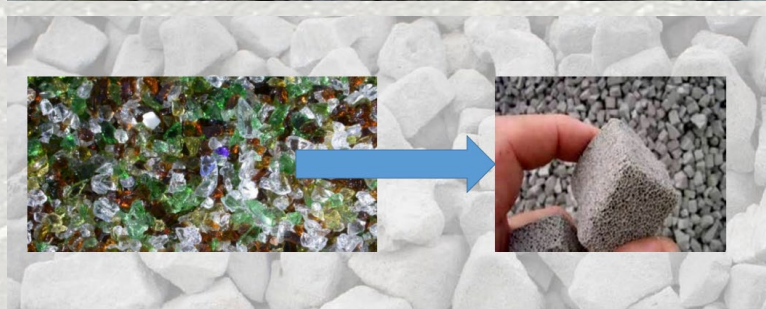
- Void Reducing Asphalt Membrane (VRAM)
 - Polymer modified asphalt material installed under asphalt longitudinal joints of asphalt pavement to reduce voids
- Foamed Glass Aggregate (FGA)
 - Lightweight aggregate used to mitigate settlement
- SR 30-Lancaster: Contraflow Gates



Contraflow Gates



CONTRAFLOW LANE REVERSAL DETAIL



Foamed Glass Aggregate



VRAM



Remote Dynamic Pile Analysis

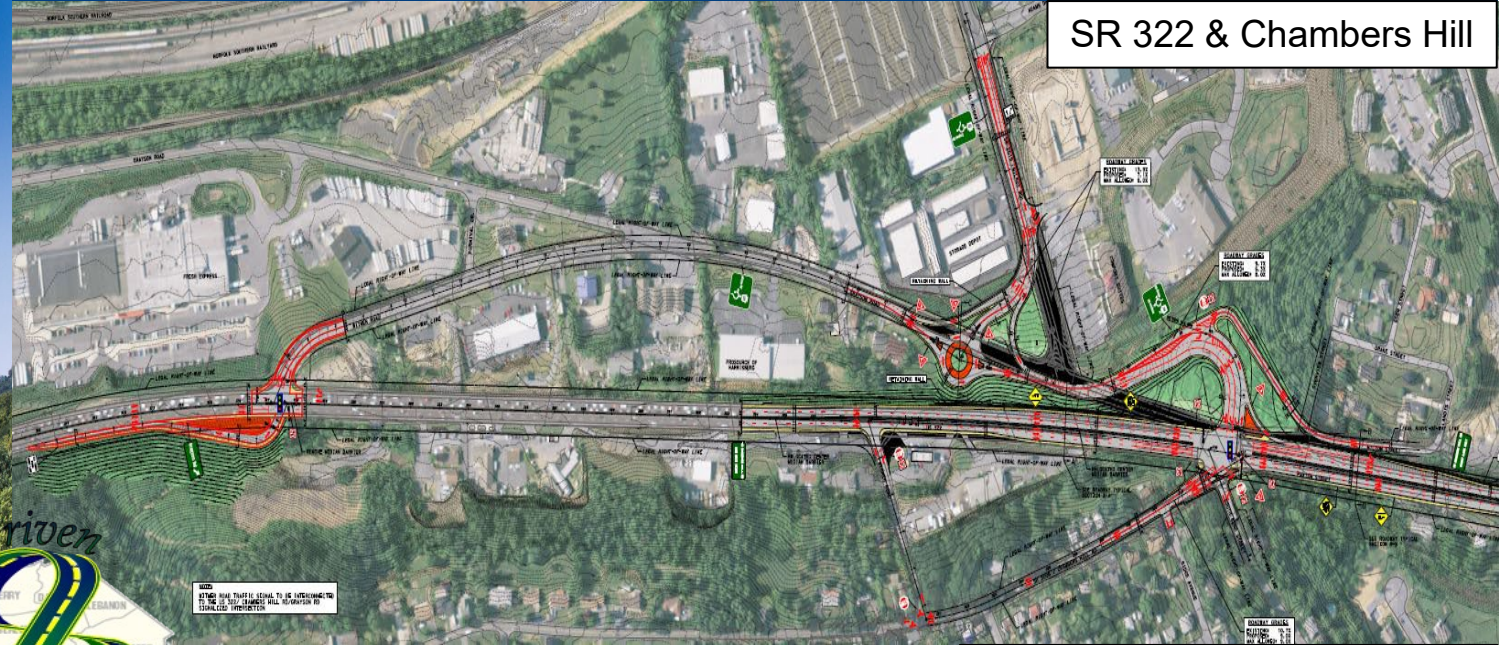


2023 SIGNIFICANT PROJECTS

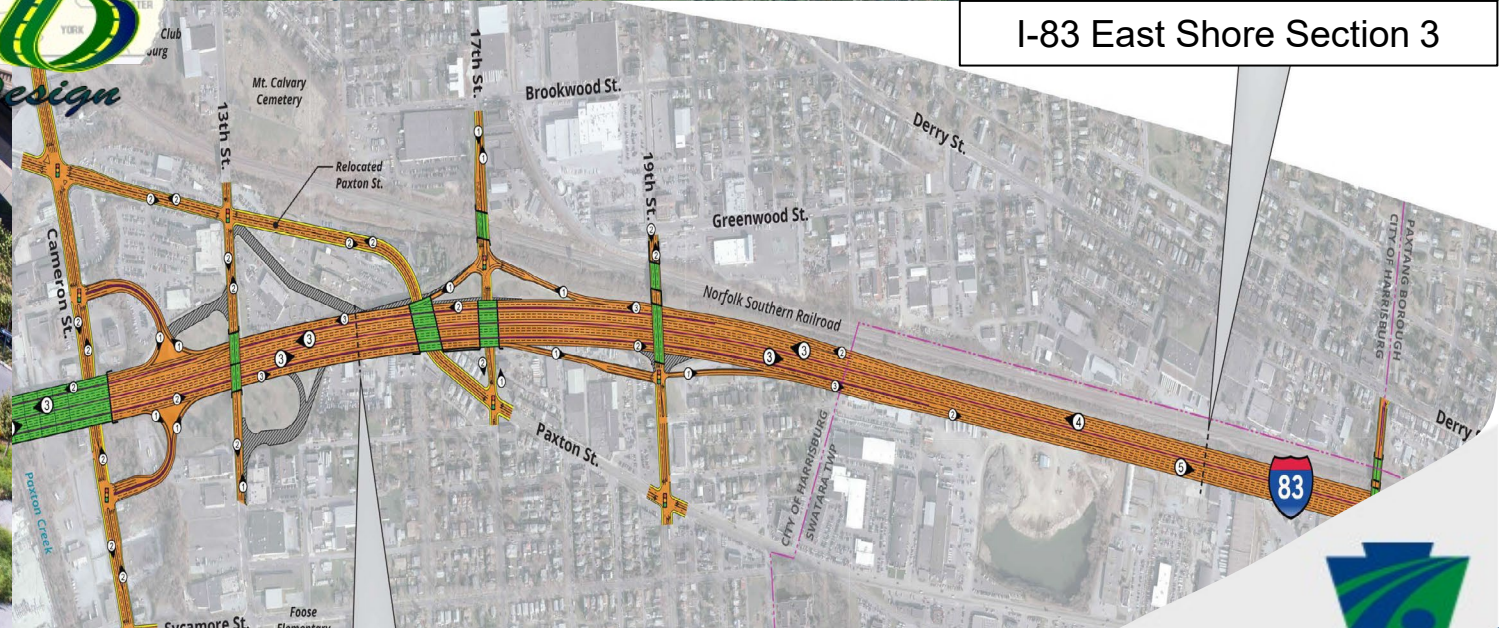
Columbia/ Wrightsville Bridge



SR 322 & Chambers Hill

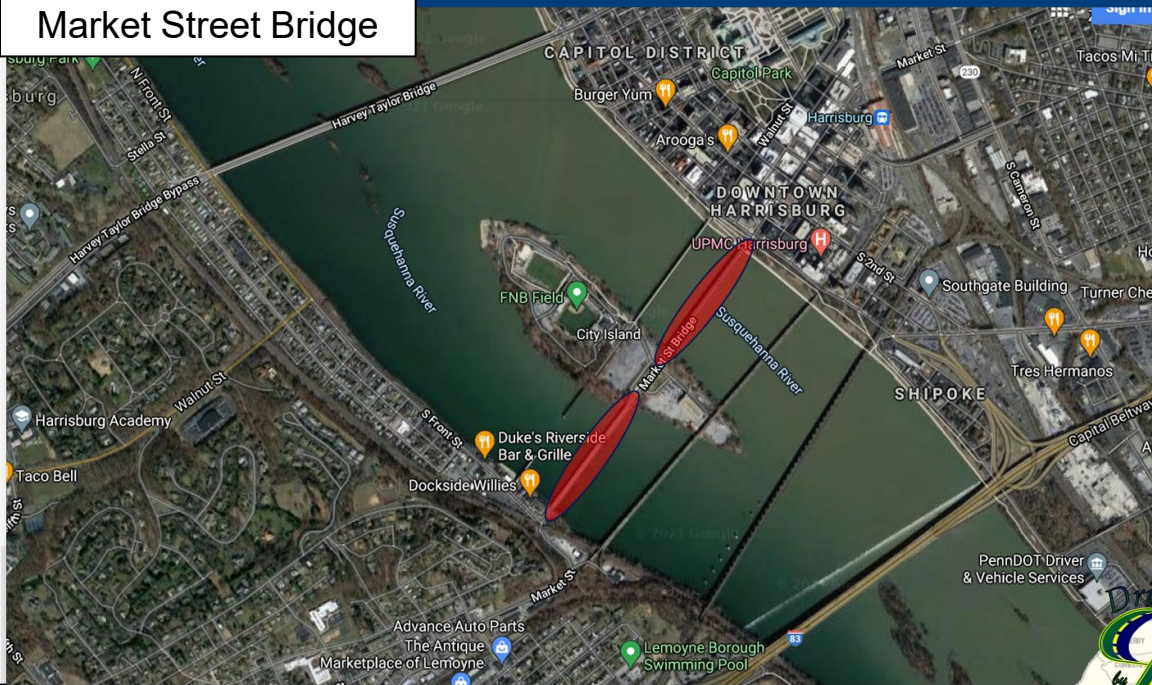


I-83 East Shore Section 3



2024 SIGNIFICANT PROJECTS

Market Street Bridge



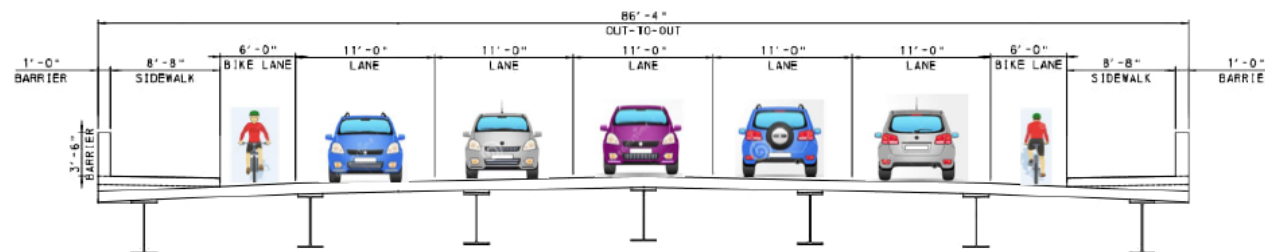
Maclay Street Bridge



Existing 4-Lane Roadway

Proposed Maclay Street Widening

- Roadway and Bridges will be widened from 62' (existing) to 86'-4" (proposed)
- Existing – four 11' wide lanes with 8' wide sidewalks
- Proposed - five 11' wide lanes, two 6' wide bike lanes, and two 8'-8" wide sidewalks



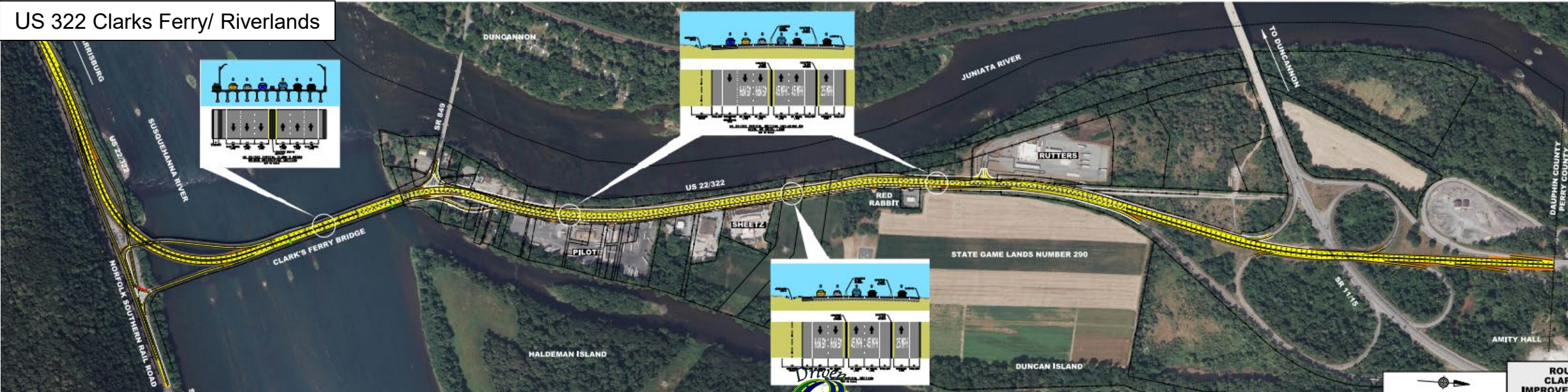
Proposed 5-Lane Roadway with Bike Lanes
(looking east toward Farm Show)

I-83 North York (Codorus Section)

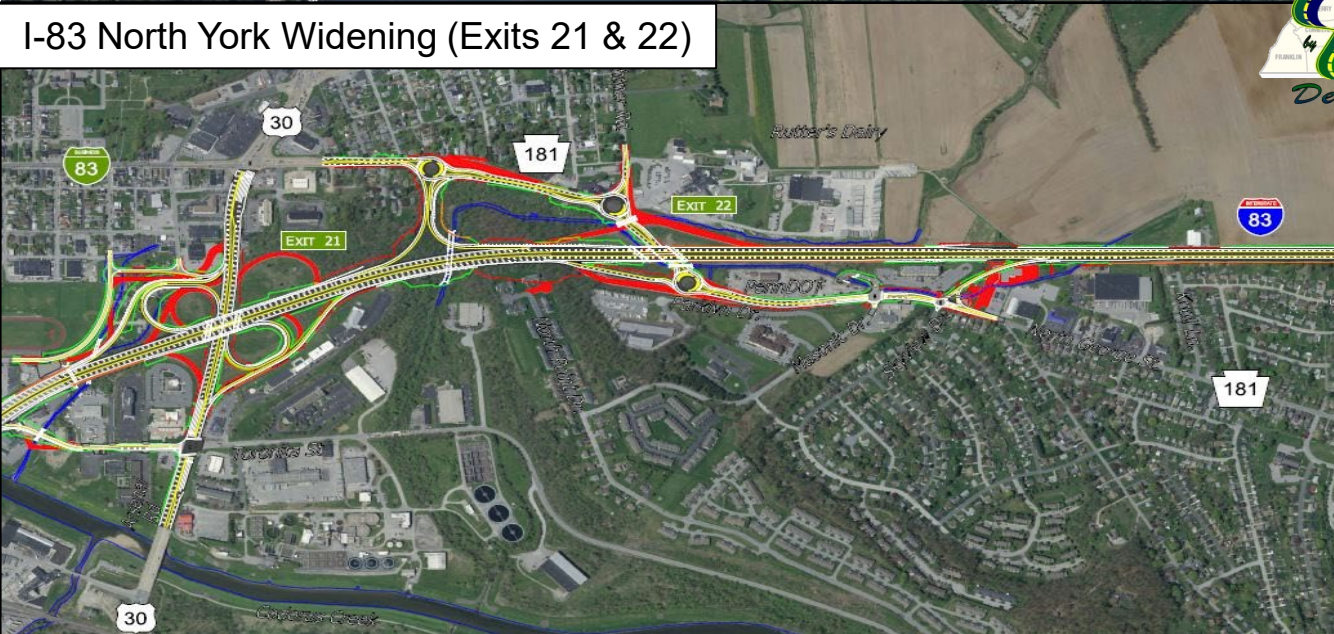


FUTURE SIGNIFICANT PROJECTS

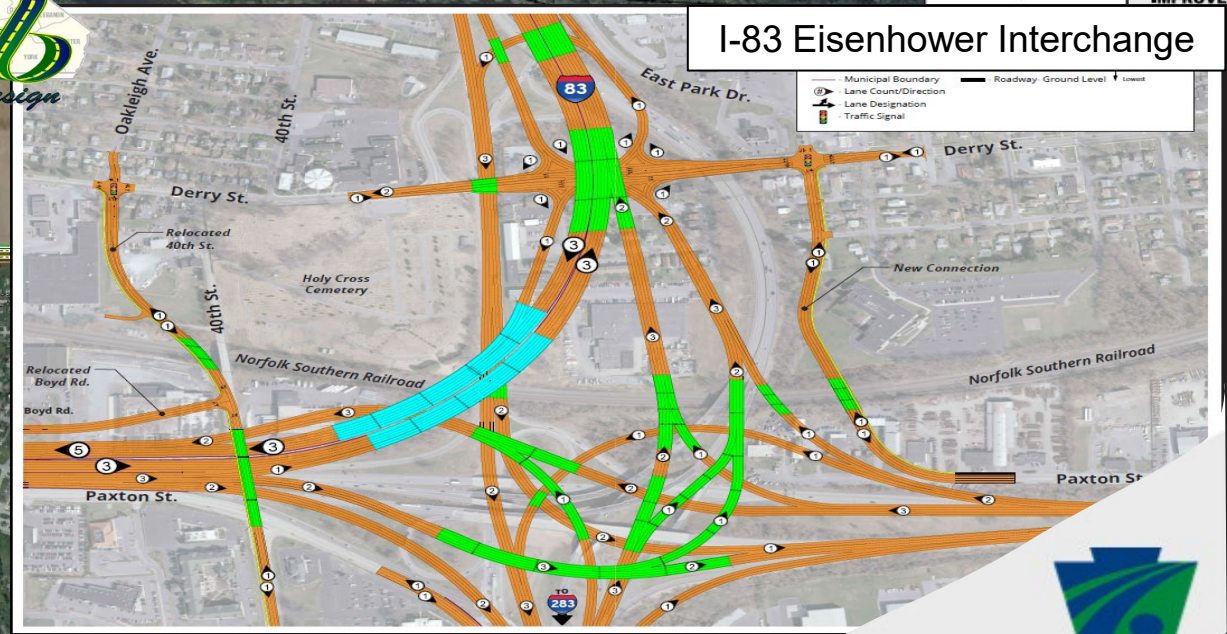
US 322 Clarks Ferry/ Riverlands



I-83 North York Widening (Exits 21 & 22)



I-83 Eisenhower Interchange



CONSULTANT AGREEMENTS

2022 – 45 agreement selections completed

Most are new bridge starts for lettings starting in 2025

2023 - ~12 Additional advertisements planned

E05547 – Safety Projects (3 intersections)

E05546 – Bridge Maintenance Contract

E05545 – Environmental Open End

E05383 – SCM Inspections

E05382 – Middletown Road Safety and Congestion Improvements

E05258 – Adams Safety Projects (2 Intersections)

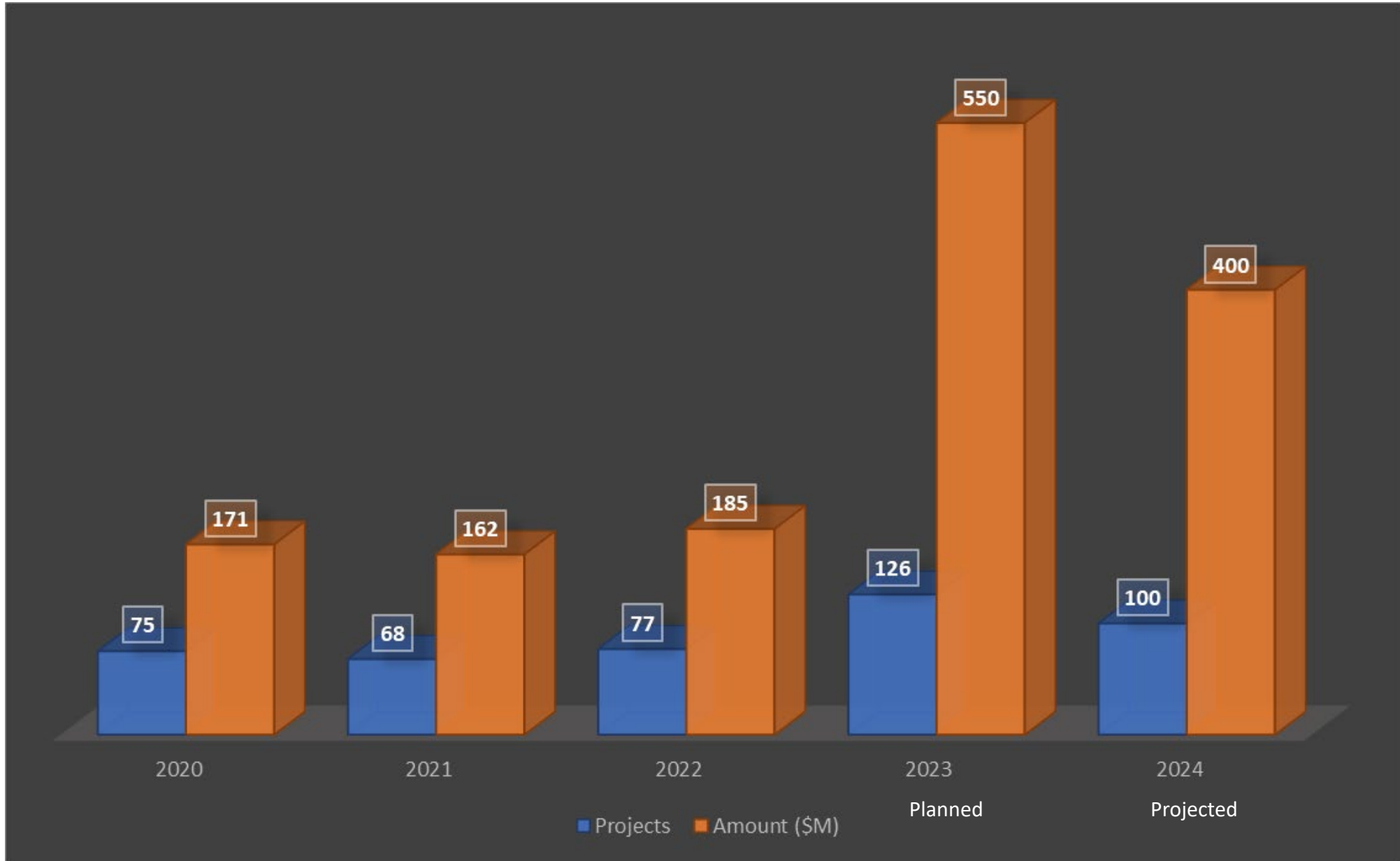
E05369 – Elizabethville Bridges (Mentor/Protégé)

E05375 – Lebanon County Bridges (Mentor/Protégé)

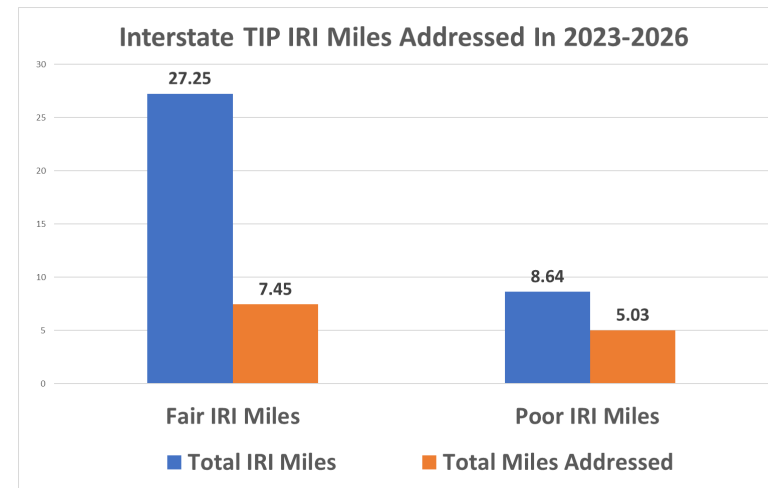
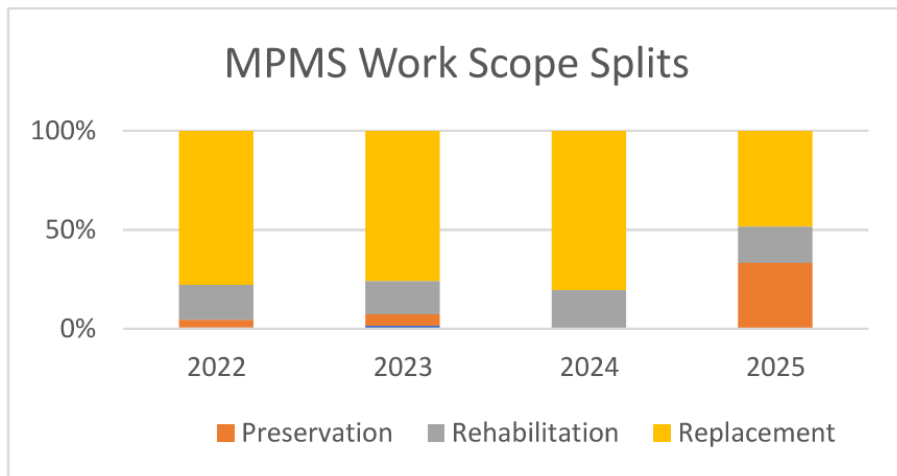
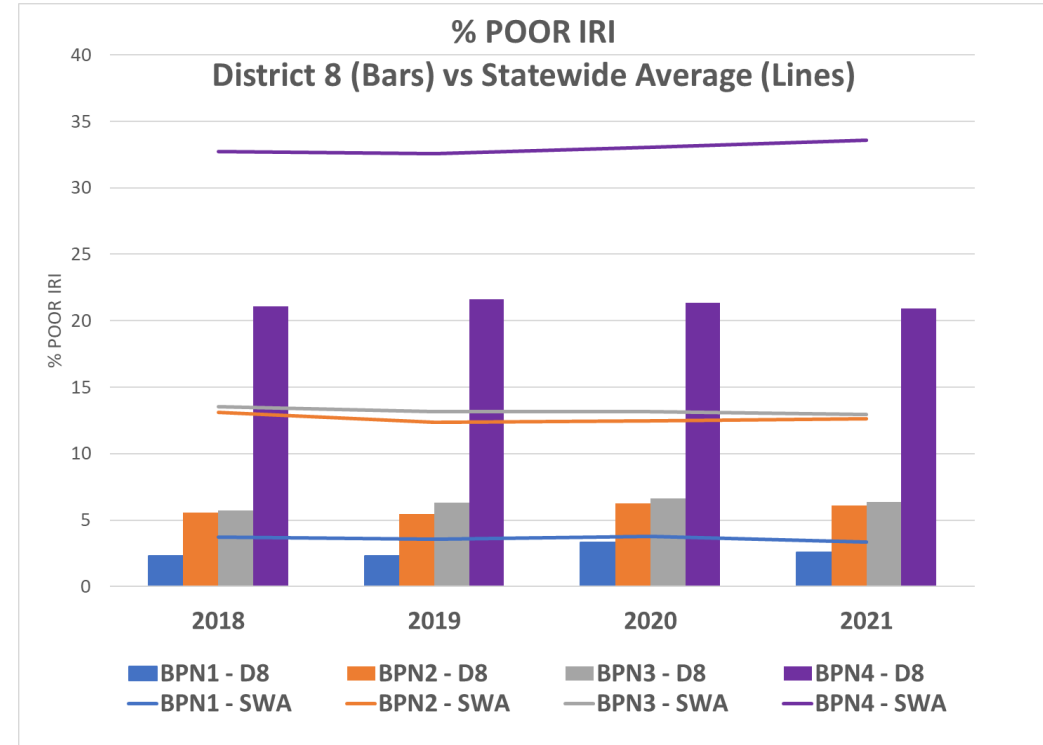
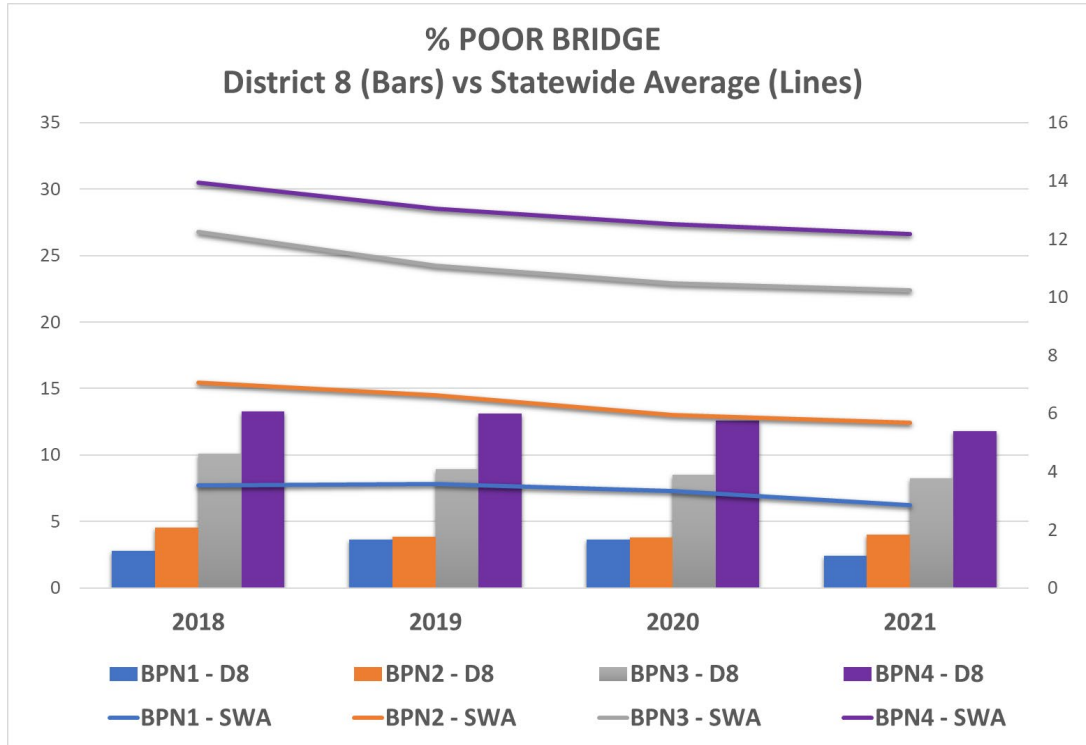
3 to 4 local bridge packages



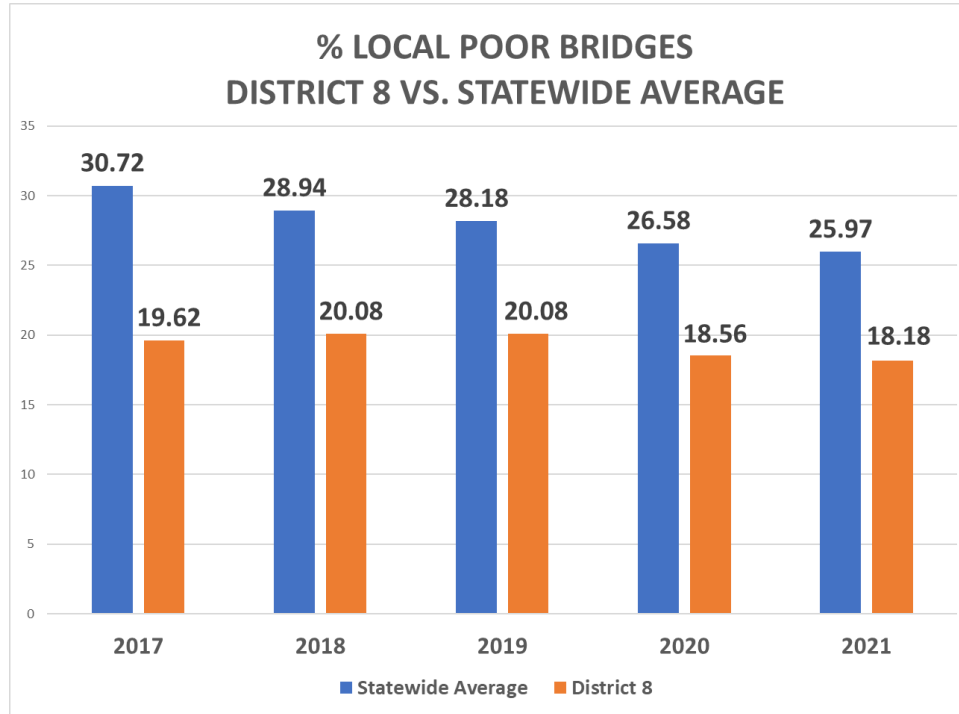
DISTRICT 8-0 LETTINGS



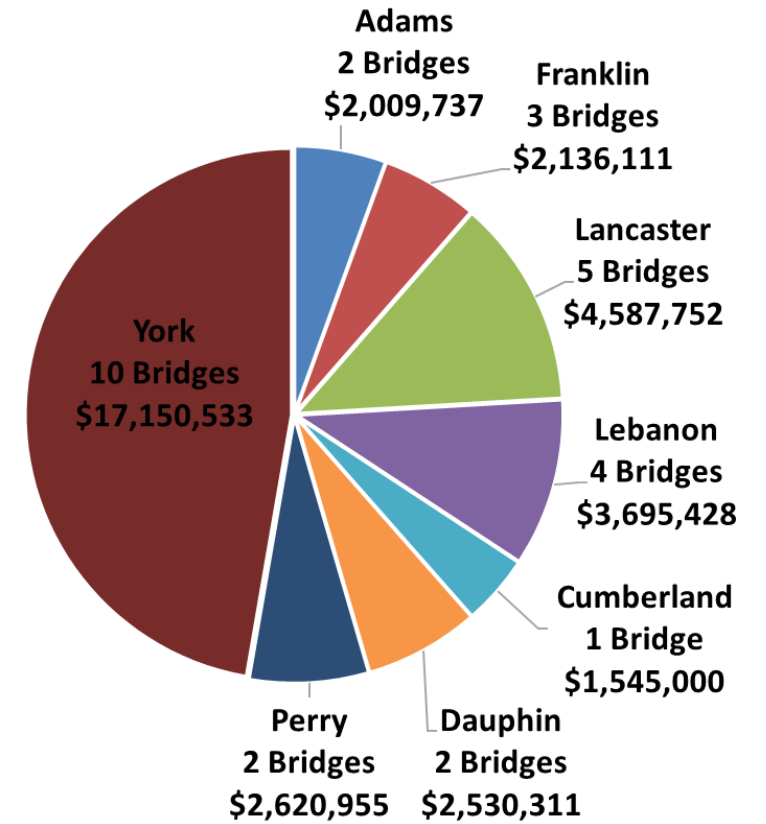
DISTRICT ASSET MANAGEMENT



DISTRICT ASSET MANAGEMENT

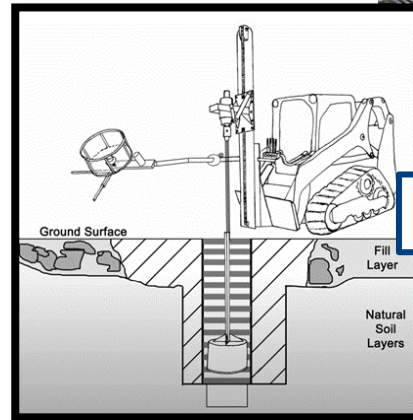
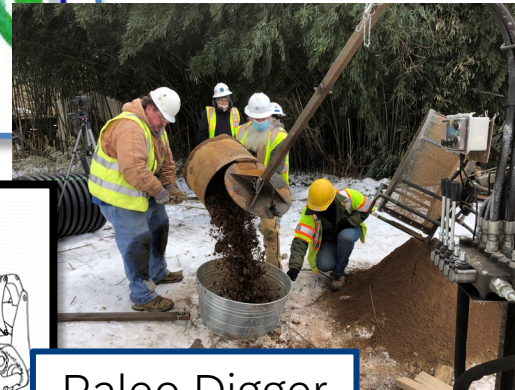


Local Bridges on 2023 TIP



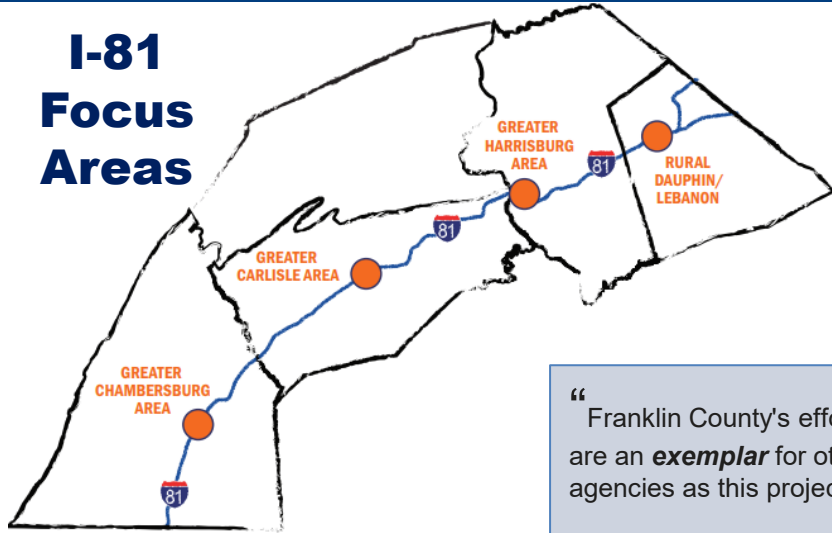
DESIGN INITIATIVES

- Leverage ECMS
 - Batched Planned Projects
 - ROW Demo Contracts Let in ECMS
- Utilize Technology
 - Mobile Lidar
 - Paleo digger
- Use More Consultant Support
 - Conditional Assessment
 - SCM Inspection
 - Consultant Project Managers / Reviews
- Support Dept Initiatives
 - Drainage Digital Delivery Pilot
 - Mentor Protégé Program



MULTIMODAL CONNECTIVITY

I-81 Focus Areas



“ Franklin County's efforts are an *exemplar* for other agencies as this project moves toward completion. ”
 - Kerry Irons
 Adventure Cycling Association

PennDOT Connects Coordination

- Halifax Borough, Dauphin County
- Union Township, Lebanon County
- Derry Township, Dauphin County
- Newport Borough, Perry County
- Washington Township, York County

Multimodal Projects and Studies

- Market Street Bridge, Dauphin County
- I-81 Improvement Strategy
- US Bike Route 11 Designation Study, Franklin County
- Pedestrian Bridge, East Pennsboro Township, Lancaster County
- Safe Harbor Trestle Bridge, Lancaster County



FIGURE 23: SOUTHBOUND AUXILIARY LANES

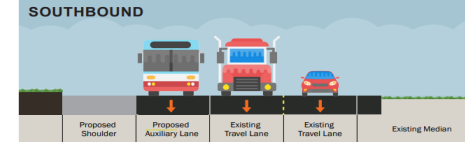
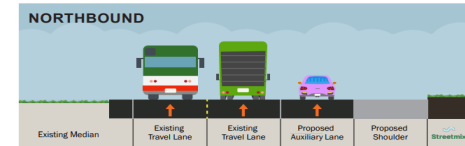
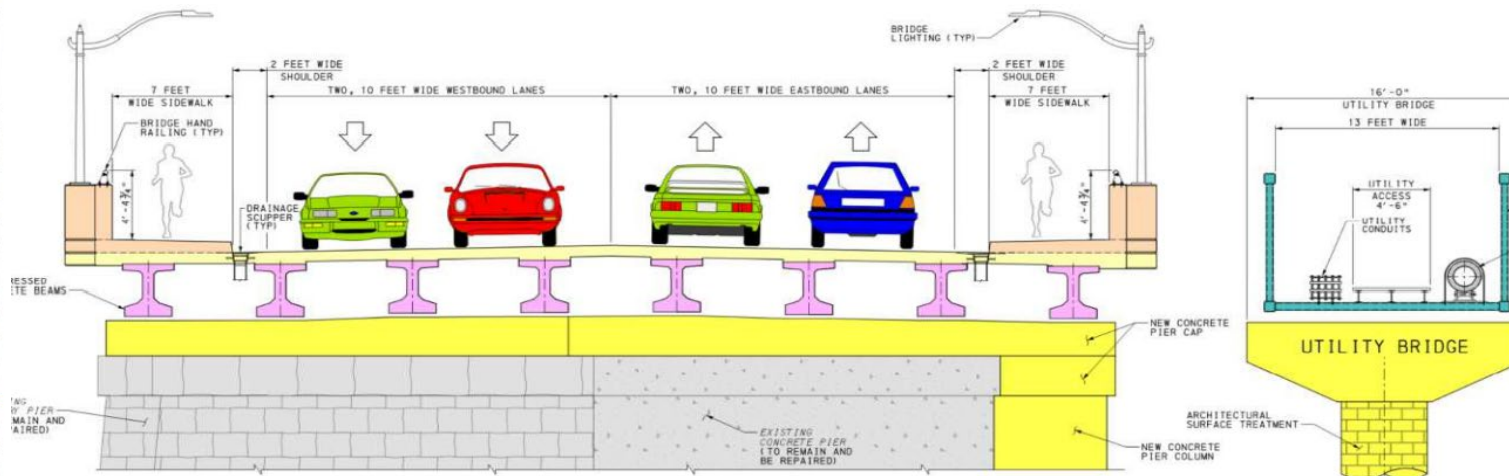
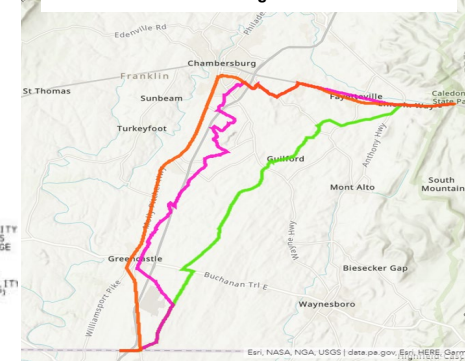


FIGURE 24: NORTHBOUND AUXILIARY LANES



US Bike Route 11 Designation Alternatives



HIGHWAY OCCUPANCY PERMITS

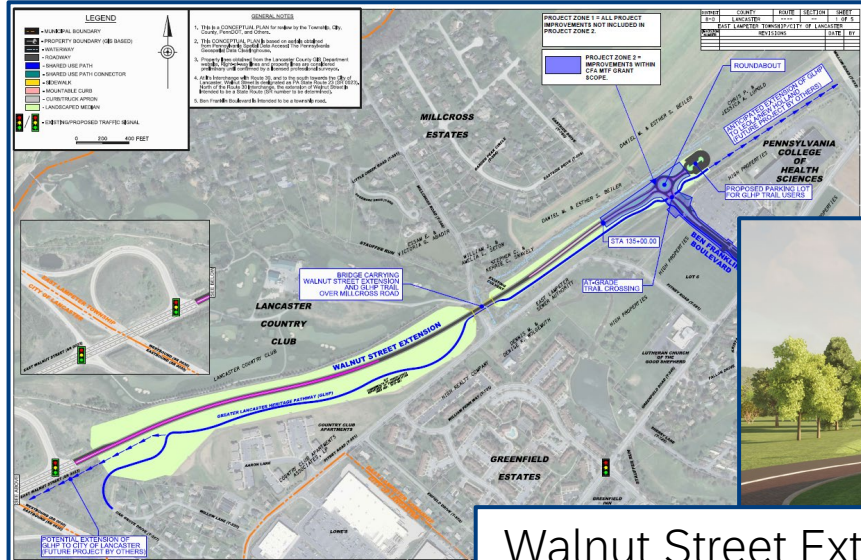


HOP Reviews

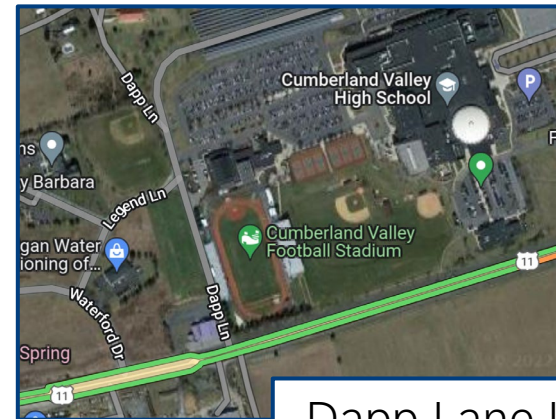
- 5,202 Applications received
 - 3,374 Permits and approximately 1200 supplements issued
 - 176 Permits and supplements issued on a weekly basis



Major HOP Projects



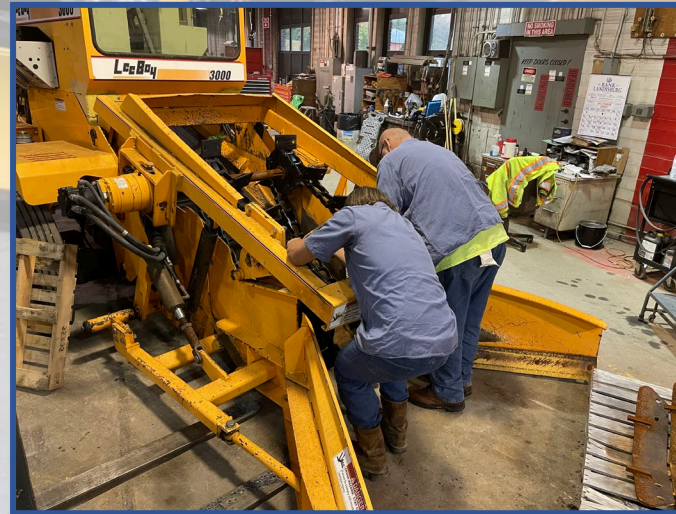
Walnut Street Extension



Dapp Lane Intersection

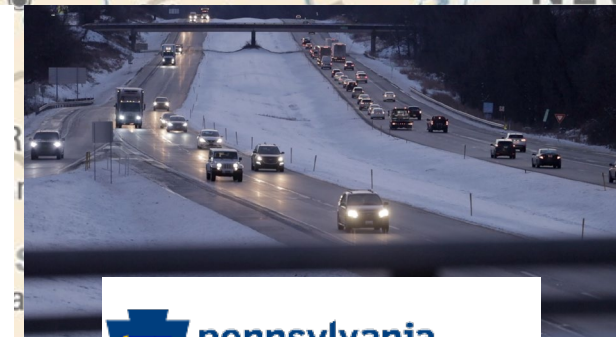
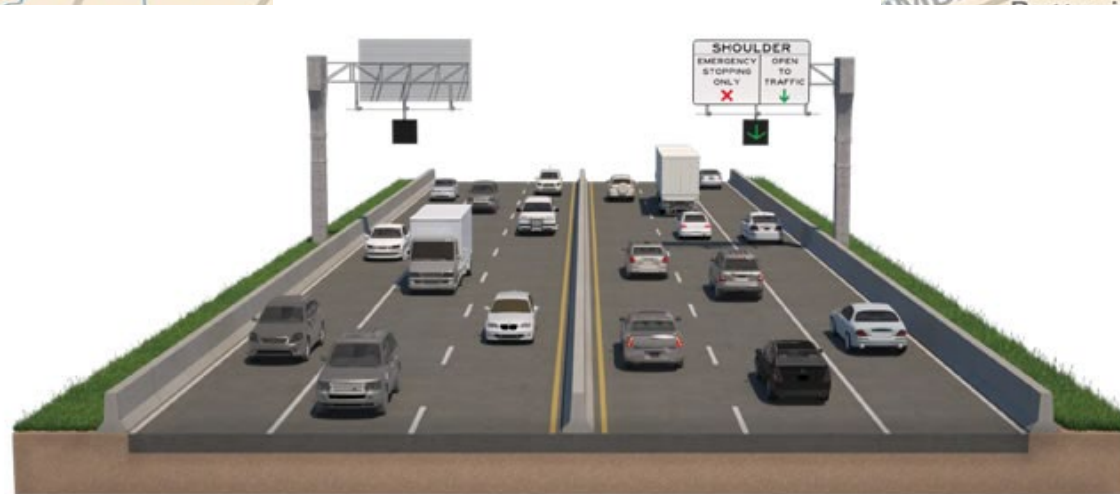
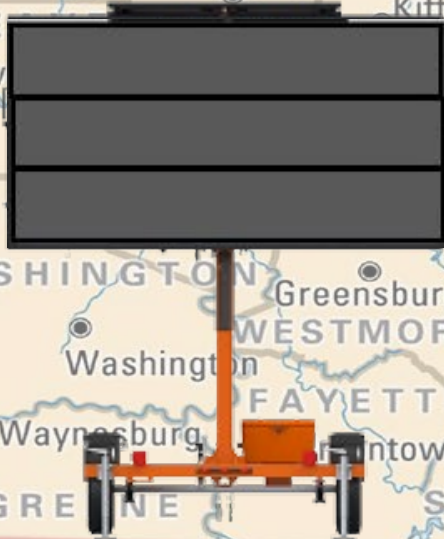


MAINTENANCE



MAINTENANCE AND TRAFFIC INNOVATIVE IDEAS

- Developing Automated Queue Detection Corridors (I-81 and US 222)
 - Utilizing the corridor module in ATMS to automatically activate DMS'
- Variable Speed Limit Corridor
- Microsoft Teams for field operations
- Traffic Unit Re-organization
 - Improving the efficiency of permitting operations by moving HOP, Special Hauling Permits, and Traffic Signal Permits under the Traffic Unit
- Safety Management re-organization



STAFFING AND RECRUITMENT



Working for the Commonwealth is Working for the Common...

powered by
NEOGOV®



Staffing

- Executive Management Retirements
 - District and County
- Temporary and Permanent Operators
 - Growing challenge
- Technical Staff
 - Difficult to retain and find candidates
 - Difficulty retaining good employees that receive higher paygrade for similar level of work
 - Turnover /training new employees
- Certified Real Estate Appraisers
 - Shortfall for major projects



PENNDOT HIRING EVENT



Wednesday, August 17
8:00 AM - 2:00 PM



2140 Herr Street
Harrisburg, PA 17013

OR APPLY ONLINE → EMPLOYMENT.PA.GOV



pennsylvania
DEPARTMENT OF TRANSPORTATION

Available positions include:

- Diesel and Construction Equipment Mechanics
 - CDL Operators*
- *On-site interviews and skills testing



TELEWORK UPDATE

- **Successes**

- Part-time telework
- Less workplace distractions
- More efficient with time, less travel
- Virtual Meetings (Scoping field view, Pre-Cons, MPO)
- Employee Morale

- **Challenges**

- Training new employees

- **Best Practices**

- Screen sharing/shadowing new employees
- Check-ins with employees
- Alternate work schedules



THANK YOU!

