

ASHE CONFERENCE

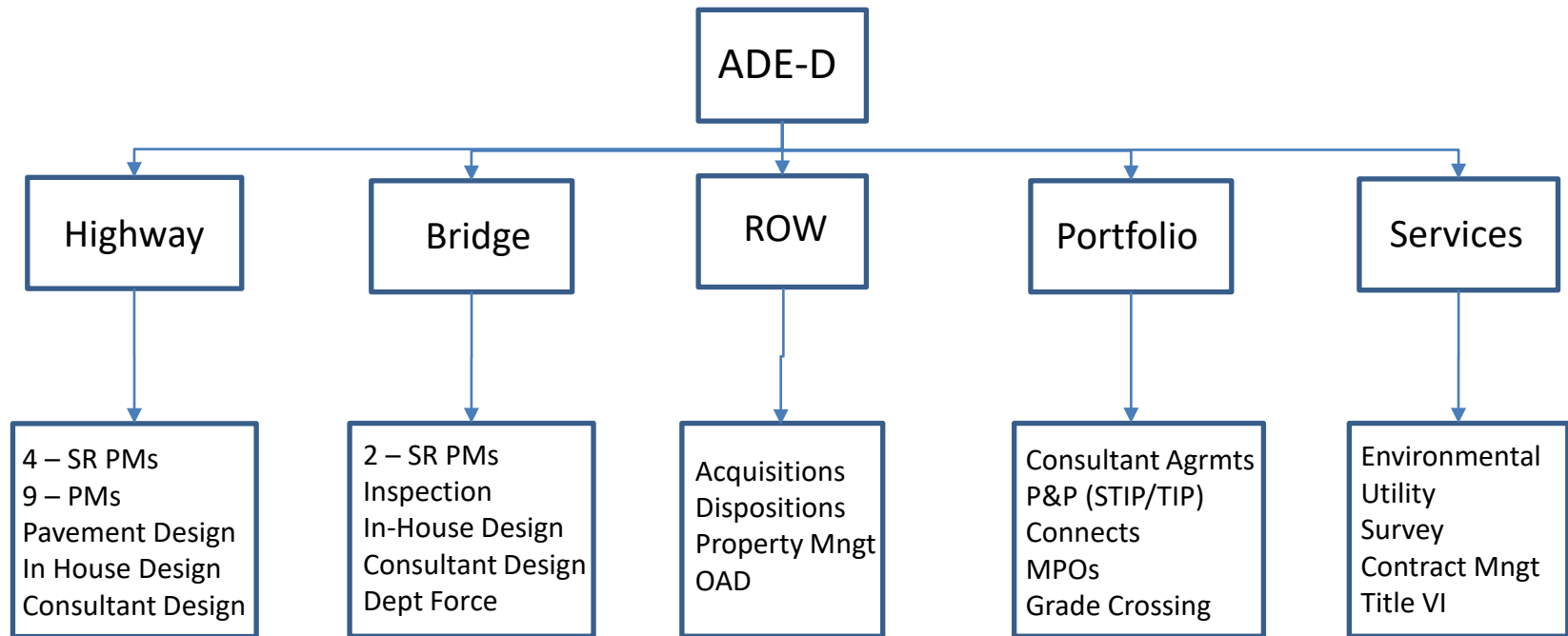
District Design Overview, Changes, and Challenges

April 26, 2022

Richard A. Reisinger, P.E.
ADE-Design
Engineering District 8-0



District Design Overview



District Design Overview

Actual / Projected Lets

	<u>Year</u>	<u>Projects</u>	<u>Amount (\$M)</u>
	2019	66	217
	2020	75	171
	2021	68	162
Projected	2022	97	230
	2023	94	407
	2024	73	519



Design Staffing Changes

- New ADE Design
- New SR Project Manager (Dave Fratangeli)
- To be Announced Soon
 - New District Bridge Engineer
 - New Design Services Engineer
 - New Regulatory Permit Coordinator
 - New Bridge & Highway Project Managers



Design Changes

Constructability / Maintainability Reviews

- District Level

Utility Coordination (URMS)

- Statewide



Construct / Maintain Ability

- Design
 - Starts at E&E SFV
 - 30% Design Review / DFV
 - 60% Design Review
 - Permit Reviews (stormwater committee as needed)
 - 75% Design Review
 - ~90% / Pre-final PS&E / FDOM (dependent)



Construct / Maintain Ability

- Construction

- Pre-con conference / Partnering
- MPT Revisions or Scope Changes (as needed)
- 50% Complete

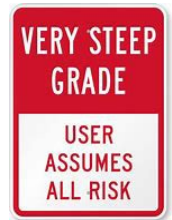
Final Inspection / After Action Review




Utilities - URMS



- URMS can handle all utility relocation needs
- Steep learning curve
- Utility must be an ECMS Business Partner
 - Issue for smaller or municipal systems
- Terminology Confusion
 - URMS “Final Plan” = old “Utility Plan Submission”



 Final “PS&E” plans



Design Challenges

- District Staffing
 - Chief of Survey
 - Real Estate Appraisers
 - Volume of Work
- PADEP Permitting
 - Function-Based Aquatic Resource Compensation Protocol
 - PADEP in lieu fee program (2023?)



Design Challenges

- Timely ROW Plans
 - Schedules are being squeezed too much
 - Preliminary (almost final) plan can/should be developed as part of PE
- Utility Clearances
 - Utility responses have been slow
 - URMS learning curve
 - Load plans into URMS timely



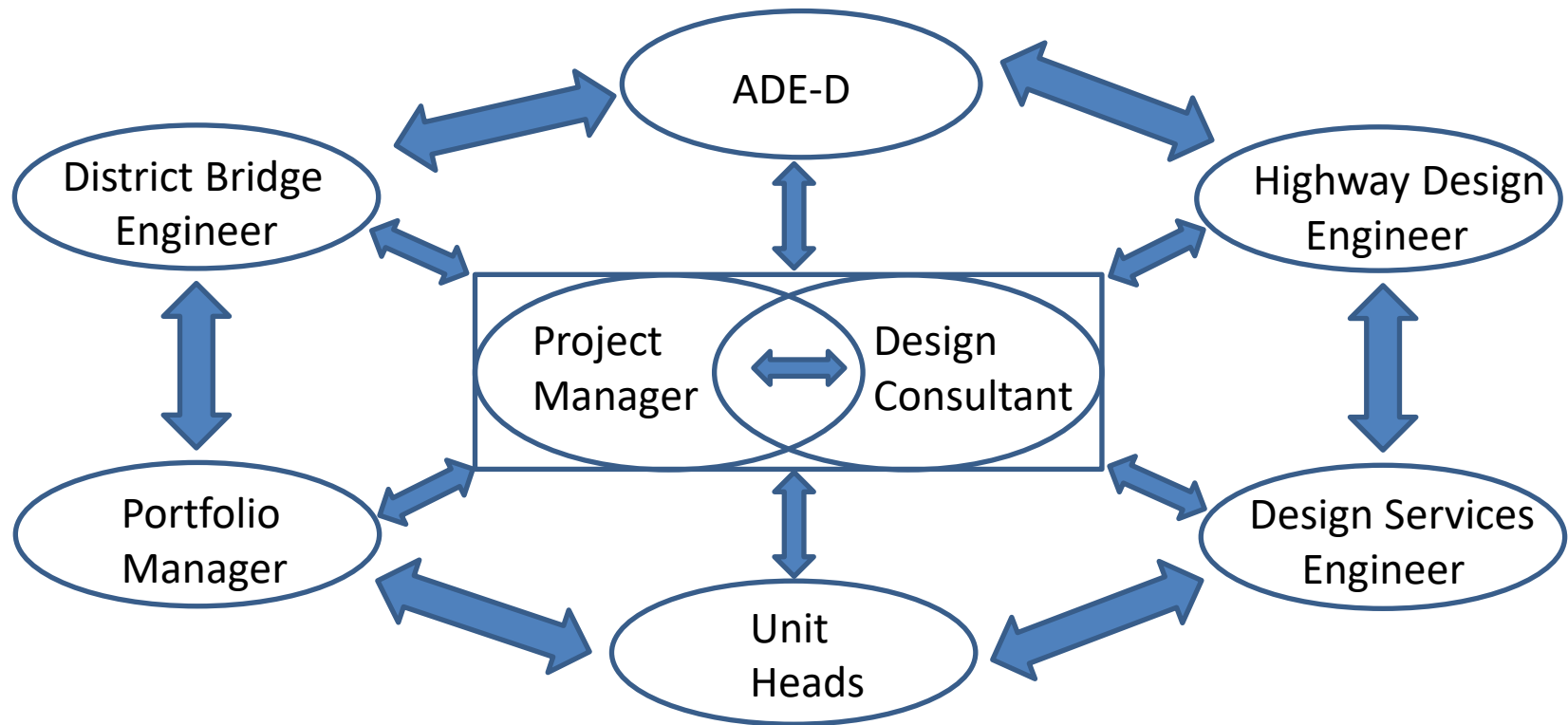
Overcoming Challenges

- Relationships
 - Every day is an interview or SOI
- Ownership of your job
 - We all “look” good or bad depending on outcome
 - Public Perception has a long memory
- Communication
 - Can always be improved
- Teamwork / Collaborate



Communication

Know “Who” Needs the Message



Successful Projects

- Collaboration between Design, Construction & Maintenance
 - Different Needs and Approaches, but same Goal
 - Every “Reasonable Opinion” Considered
 - This must include consultants in every group!
- Incorporate Lessons Learned
 - AARs
 - Best Practices



Our Expectations

- Be Proactive when asking Questions
- Provide Options and make Recommendations
 - Don't just present the problem
 - What would you do if in our role?
 - How can we defend the decision?
 - We are relying on you to be an expert
- Serve as an extension of District Staff
- Remember you “Represent” PENNDOT too!



Closing

Thank You

