

PTC – MS 4 OVERVIEW



ASHE Harrisburg/PennDOT District 8-0/PTC Conference



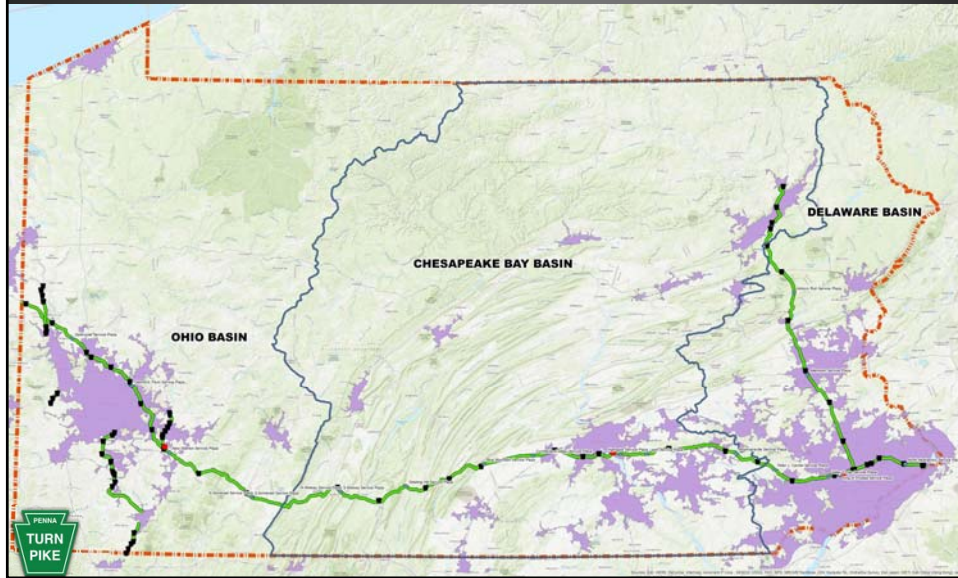
MS4 =

Municipal
Separate
Storm
Sewer
System

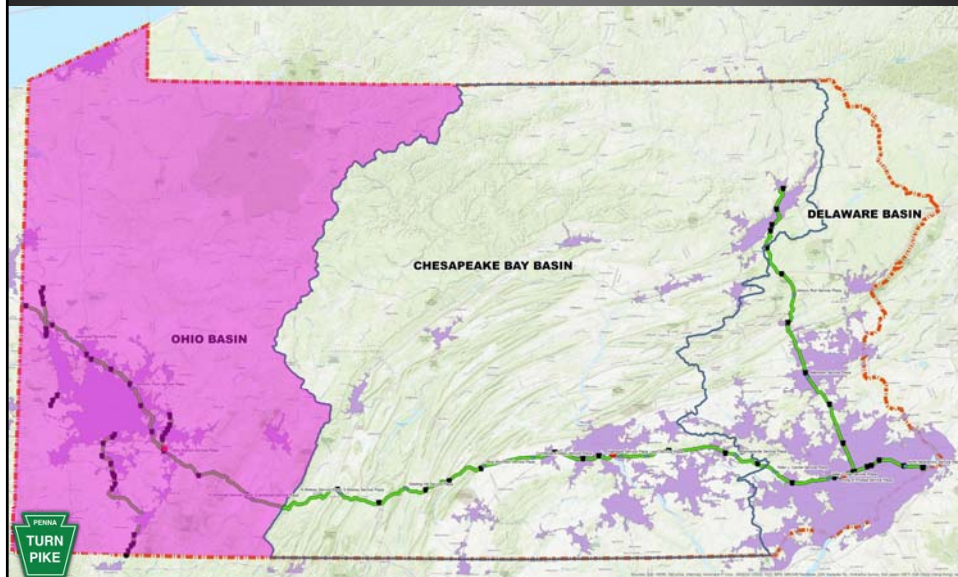
Network that conveys exclusively stormwater and is owned or operated by a municipality or similar regulated entity.



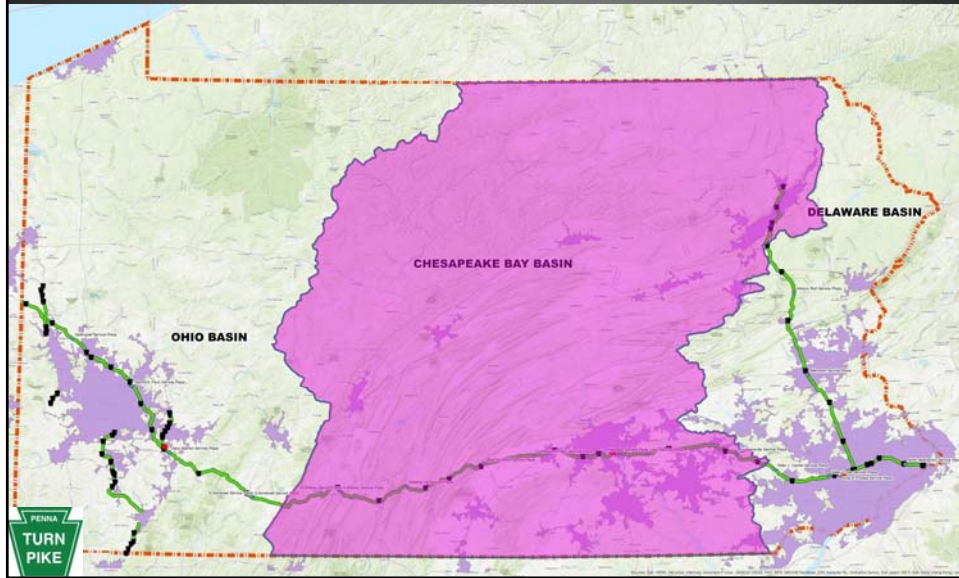
PTC Regulated MS4 Areas ("Urbanized Areas")



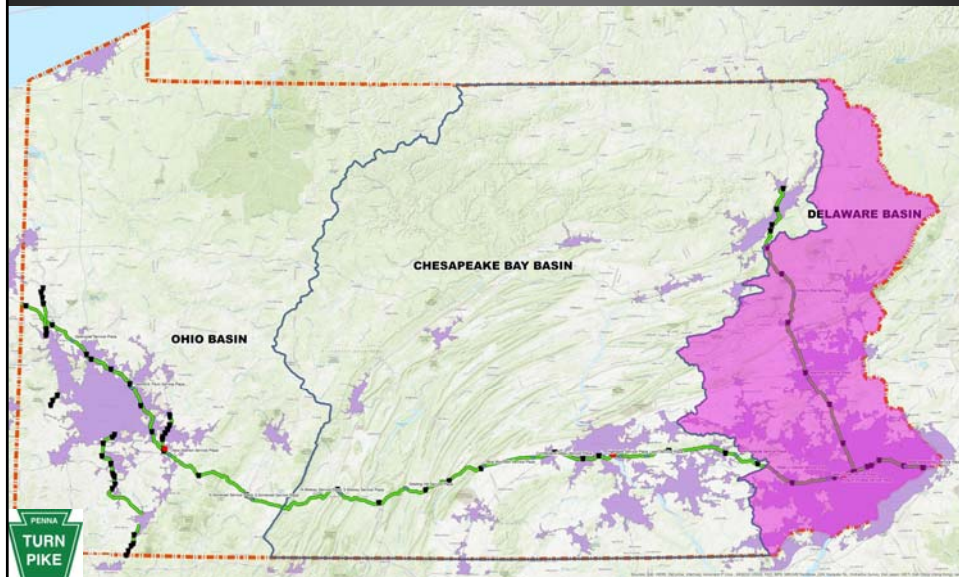
PTC Regulated MS4 Overview



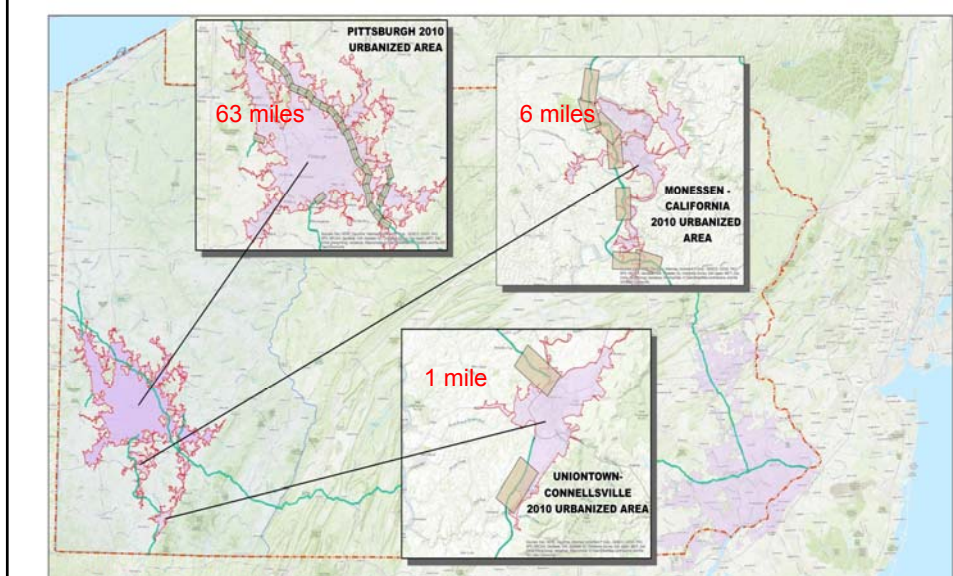
PTC Regulated MS4 Overview



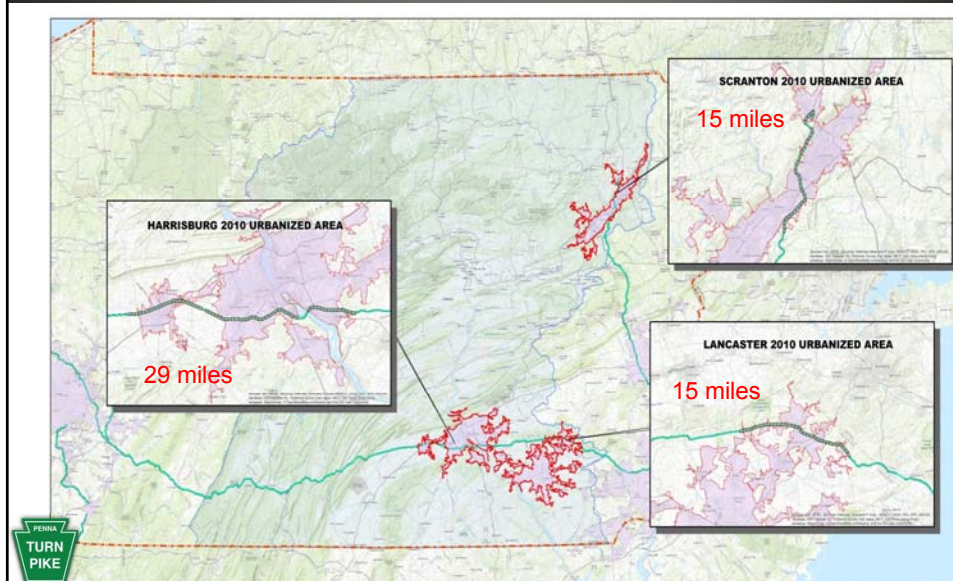
PTC Regulated MS4 Overview



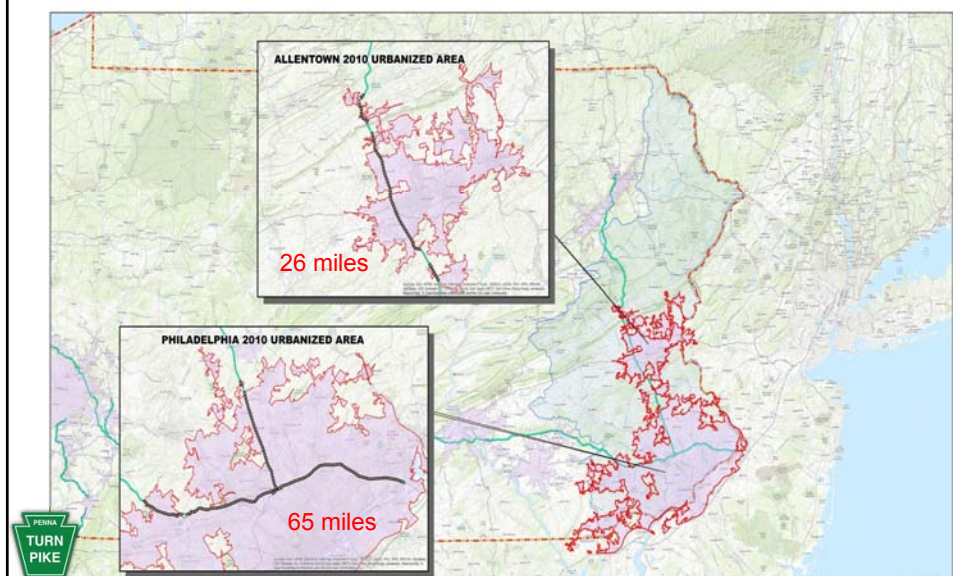
PTC Regulated MS4 - Ohio River



PTC Regulated MS4 - Chesapeake Bay



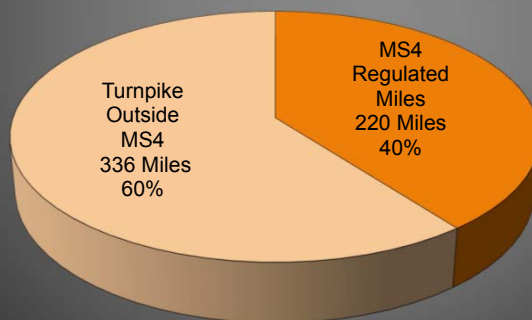
PTC Regulated MS4 - Delaware River



PA Turnpike Statistics

PA Turnpike Mainline and Extensions

* 40% of the Turnpike is within the MS4





PA Turnpike Costs

Capital Plan Impacts:
???

Major Basin	Cost (\$Millions)
Ohio River	\$1.6 to \$15.7
Chesapeake Bay	\$1.6 to \$47.6
Delaware River	\$2.4 to \$41.9



PA Turnpike Status

2010-PA-BW0204 - 12/01/16 Permit No. PA1139602

DEP pennsylvania
Department of Environmental Protection

**NATIONAL POLLUTANT DISCHARGE ELIMINATION SYSTEM (NPDES)
INDIVIDUAL PERMIT TO DISCHARGE STORMWATER FROM
SMALL MUNICIPAL SEPARATE STORM SEWER SYSTEMS (MS4s)
PERMIT**

NPDES PERMIT NO. PA1139602

In compliance with the provisions of the Clean Water Act, 33 U.S.C. Section 1251 et seq. ("The Act") and Pennsylvania's Clean Streams Law, as amended, 35 P.S. Section 691.1 et seq.

**PA Turnpike Commission (PTC),
PO Box 67676
Harrisburg, PA 17106-7676**

is authorized to discharge from a regulated small municipal separate storm sewer system (MS4) located within Urbanized Areas to surface waters of the Commonwealth in accordance with effluent limitations, monitoring requirements and other conditions set forth herein.

THIS PERMIT SHALL BECOME EFFECTIVE ON _____
THIS PERMIT SHALL EXPIRE AT MIDNIGHT ON _____

The authority granted by coverage under this Permit is subject to the following further qualifications:

- The permittee shall comply with the effluent limitations and reporting requirements contained in this permit.
- The application and its supporting documents are incorporated into this permit. If there is a conflict between the application, its supporting documents and/or amendments, and the terms and conditions of this permit, the terms and conditions of this permit shall apply.
- Failure to comply with the terms, conditions or effluent limitations of this permit is grounds for enforcement action: for permit termination, revocation and reissuance, or modification; or for denial of a permit renewal application. (32 P.S. 122.41(a))
- A complete application for renewal of this permit must be submitted to DEP at least 180 days prior to the expiration date unless permission has been granted by DEP for submission at a later date), using the appropriate NPDES permit application form (32 P.S. 122.41(b), 122.41(c)). In the event that a timely and complete application for renewal has been submitted and DEP is unable through no fault of the permittee, to reissue the permit before the expiration date, the terms and conditions of this permit, including submission of the Annual MS4 Status Reports, will be automatically continued and will remain fully effective and enforceable against the discharger until DEP takes final action on the pending permit application. (32 P.S. Code §§ 92a.7(b), (c))
- The permittee shall implement Pollutant Control Measures as specified in Appendices A, B, and C.
- The permittee shall achieve pollutant loading reductions for sediment, Total Phosphorus, and Total Nitrogen as specified in Appendices D and E unless otherwise approved by DEP.

Date Permit Issued: _____ Issued By: Sean M. Furjanc, P.E.
Environmental Program Manager
Division of NPDES Permitting

- 1 -



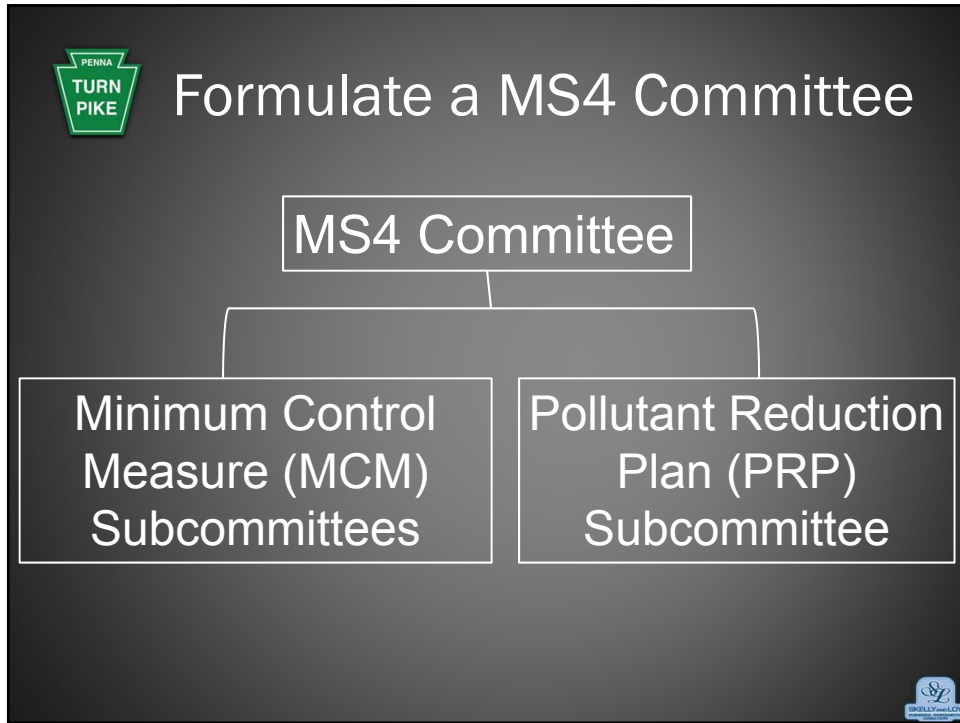
PA Turnpike Approach

1. Professional Service Support
2. Formulate a MS4 Committee
3. Automate the Process



Professional Service Support





- ## Minimum Control Measures (MCM)
1. Public Education and Outreach
 2. Public Involvement and Participation
 3. Illicit Discharge Detection and Elimination
 4. Construction Site Runoff Control
 5. Post-construction Stormwater Management in New Development
 6. Pollution Prevention and Good Housekeeping for Municipal Operations and Maintenance
- Document ... Document ... Document ...**



Pollutant Reduction Plan (PRP)



- * 10% Reduction of **Sediment** in Stormwater Runoff
- * Primary Pollutants of concern
 - Sediment
 - Nutrients
 - Phosphorus
 - Nitrogen



Pollutant Reduction Plan (PRP)

- * Retrofitting existing facilities
- * MS4 projects within the right-of-way
- * Increase facilities in upcoming projects
 - Oversize a facility to meet project requirement and gain MS4 credits
 - SWM facility
 - BMP
 - Mitigation





Automate the Process



Pennsylvania Turnpike Commission
Stormwater Management Application
Requirements

High-Level Requirements Document (Final)
Document Version 1.1 • March 14, 2018

Document Prepared By:
Momentum, Inc.
2120 Market Street, Suite 100
Camp Hill, PA 17011



Automate the Process



REGISTER SIGN IN FEEDBACK

Maintenance Considerations for Stormwater BMP Design



QUALITY IMPROVEMENT

Sign In Register

Critical Stages – Stormwater Management Design & Construction



*Thank
You!!*



ASHE Harrisburg/PennDOT District 8-0/PTC Conference

