


DISTRICT 8 ASHE PRESENTATION
APRIL 7, 2017

On the move



DISTRICT 8 ASHE PRESENTATION
APRIL 7, 2017

12th ANNUAL
8-0/ASHE CONFERENCE

April 7, 2017

John T. Kennedy, P.E., Resource & Delivery Engineer
Engineering District 8-0



FAMOUS ASCOT WEARERS



DISTRICT 8 ASHE PRESENTATION

- CHANGES IN DESIGN UNIT SINCE ASHE 2016.....
 - Christopher Drda, P.E. named Asst. District Executive for Design (9/16)
 - Richard Reisinger, P.E., named Design Services Engineer (02/17)
 - John Kennedy, P.E., named Resource & Delivery Engineer (03/17)
 - Anthony (Tony) Berger, P.E., named Acting Portfolio Manager (03/17)
- POTENTIAL CHANGES TO RETIREMENT SYSTEM
 - Gov's 2017-2018 Budget include request to allow early retirement window
 - 14 out of 19 most senior managers across entire District could be eligible
 - In Design, 6 out of 11 senior managers could be eligible
- THIS MORNING'S AGENDA.....
 - Michael Keiser, P.E. District Executive
 - Christopher Drda, P.E.
 - Anthony (Tony) Berger, P.E.
 - Brandon Dean & Christopher McKee
 - Mark Malhenzie & Gregory (Greg) Penny



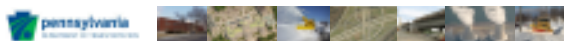
TURNING OVER A NEW LEAF

- **NAMED RESOURCE & DELIVERY ENGR**
 - NEW POSITION CREATED IN LATE 2016
 - VARIETY OF DUTIES & RESPONSIBILITIES
 - PENNDOT CONNECTS
 - MULTIMODAL PROGRAM MANAGER
 - UPDATING INTERSTATE MNGMNT PLANS
 - GREEN LIGHT GO PROGRAM
- **MY 13TH (AND LAST??) ASHE PRESENTATION**



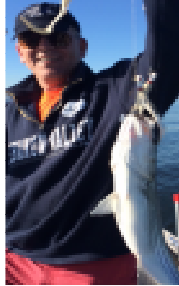
MICHAEL KEISER, P.E.

- BSPE from Penn State
- Started with 8-0 in 1986
 - Civil Engineer in Design (1987)
 - Consultant Liaison Engr(1989)
 - Plans Engineer (1997)
 - Highway Design Engr (1999)
 - ADE for Design in 5-0 (2008)
 - DE in 8-0 (2010)



CHRISTOPHER DRDA, P.E.

- BSCE from Penn State
- Started career at Conn. DOT (1986)
- Joined PennDOT in 1-0 (1987)
 - Promoted to BOD (1994)
 - Promoted to BOCM (1996)
 - Named CAD Chief (2003)
 - Design Services Engr in 8-0 (2010)
 - ADE for Design (2016)
- Two time award winner of Secretary's Award for Excellence (one of two known alive to ever to achieve this, who was the other ????)



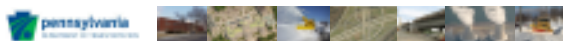
GREGORY PENNY

- BA from
- Masters
- Started c
- PA Lotter
- Deputy P
- Special A
- CRC for D
- "Hardest
- District's very own Ari Fleischer (W's press sec)



ANTHONY BERGER, P.E.

- BSCE from Univ. of Pittsburgh
- Joined PennDOT District 9-0 (1998)
 - District Maintenance Unit (1999)
 - Highway Design Unit (2001)
 - Planning/Programming Mngr (2002)
 - Bedford County Asst. Mngr (2004)
 - Joined District 8-0 (2014)
 - Planning & Programming Mngr
 - Acting Portfolio Manager (2017)



MARK MALHENZIE

- BSCE Penn State
- Joined PennDOT 8-0 in 1992
 - CE in Highway Design (1993)
 - Project Manager in 2001
 - Senior PM in 2003
- Recent recipient of Secretary's Award for Excellence





BRANDON DEAN

- BSCE from Univ. of Maryland
- Started career at Indian Head Naval Base (2005)
- Joined J. Michael Brill Engineering (2006)
- Came to District 8-0 (2011)
 - Bridge, APRAS Unit (2011)
 - Civil Engineer Highway Design (2014)
 - Highway Design Project Mngr (2014)



CHRISTOPHER MCKEE

- BSCE from Penn Tech
- Joined PennDOT in 8-0 (2009)
- Design unit since 2010
 - Civil Engineer Highway Design Unit (2010)
 - Highway Design Project Manager (2013)



THANK YOU

?? QUESTIONS ??